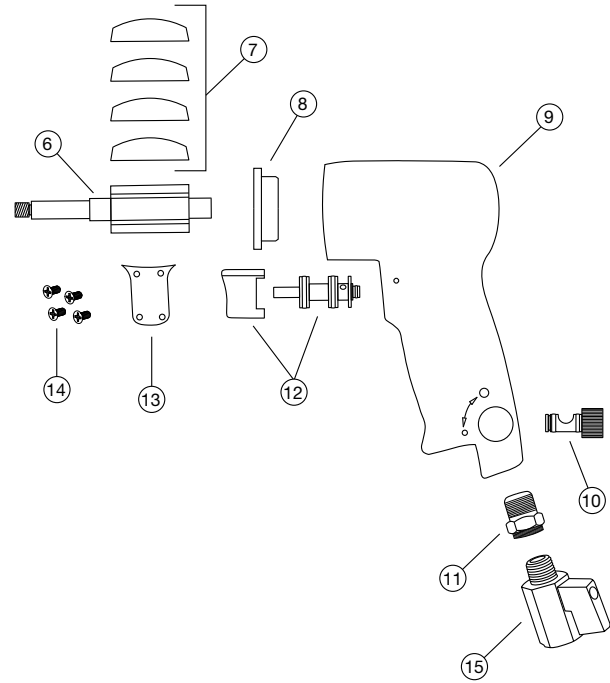
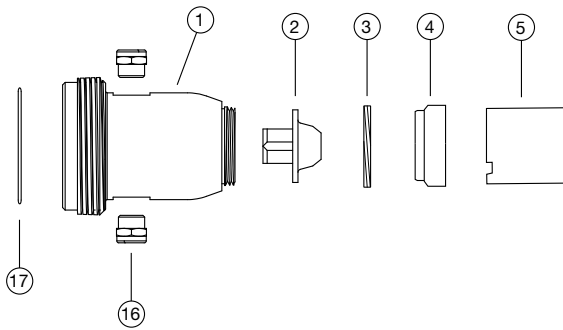
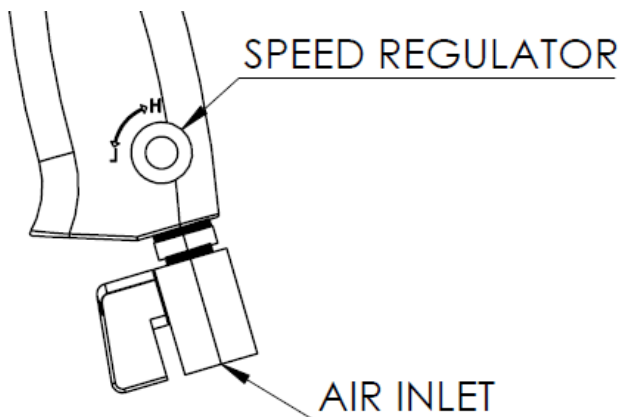


SP-B2 Series Spare Parts List



Description: The SP-B2P air motor is equipped with a plate which permanently locks the trigger in the "ON" position. The speed of the motor can be adjusted by turning the speed regulator on the side of the motor handle between the "OFF" position and the "MAX" position.

Operation: Prior to connecting an air source to the air inlet of the SP-B2P, ensure that the speed regulator dial is in the "OFF" position (See Figure 1). Once the air source has been connected and the discharge hose of the pump tube is in it's desired location, the speed regulator dial can be turned toward "MAX". Upon completion of the pumping process, the speed regulator dial should be returned to the "OFF" position. **⚠ Failure to do so can result in severe injury.**



Ref. Number	Description	Part Number
1	Adapter	3170B
2	Motor Coupling	8333
3	Motor Lock Nut	317-B-27
4	Front End Plate Assembly	317-B-A11
5	Cylinder	317-B-A3
6	Rotor	317-B-53
7	Vanes (Set of 4)	317-B-42-4
8	Rear End Plate Assembly	317-B-A12
9	Housing	317-B-40
10	Regulator	317-B-A249
11	Inlet Bushing	317-B-38
12	Trigger Assembly	317-B-A93
13	Trigger Plate (SP-B2P Only)	3176B
14	Trigger Plate Screws (4 Required) (SP-B2P Only)	3177B
15	Ball Valve, 1/4" MNPT x 1/4" FNPT	3178
16	Silencer (2 Required)	1206623
17	O-Ring, Viton	8226V

Figure 1