

Fig. 1

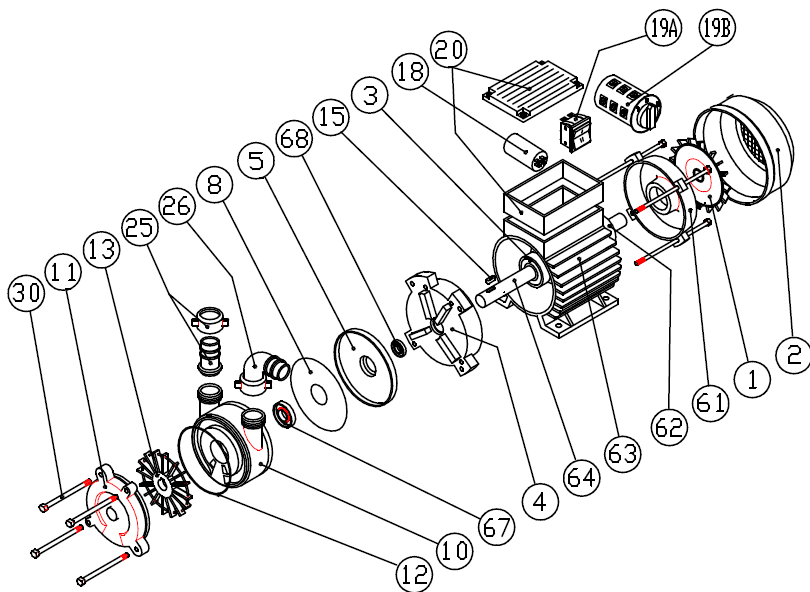


Fig. 2

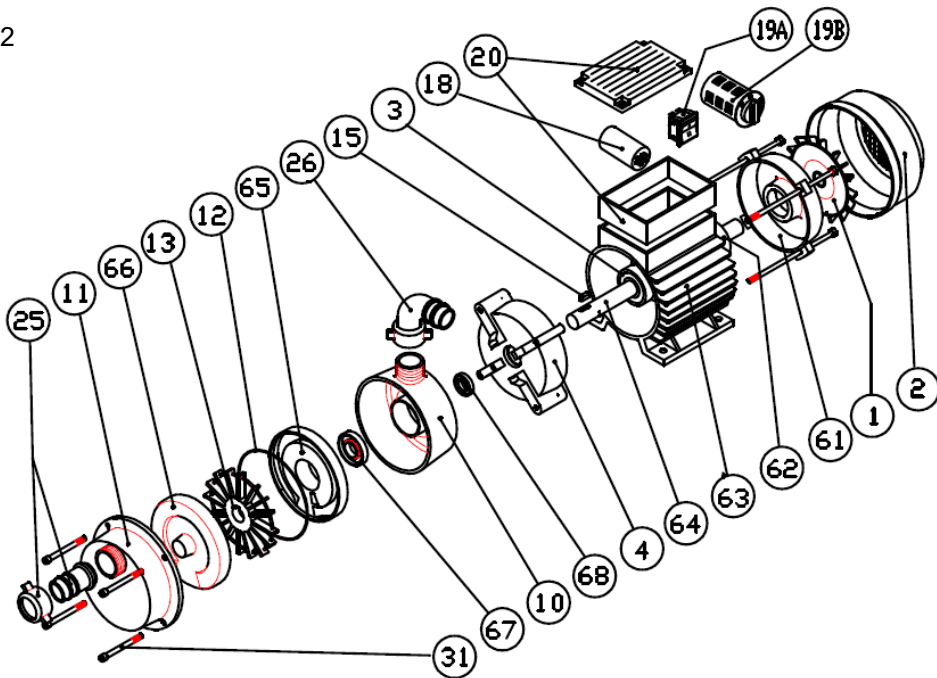


Fig. 3A

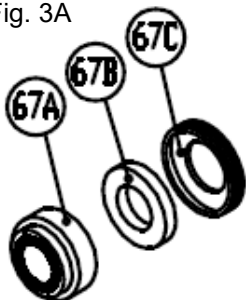
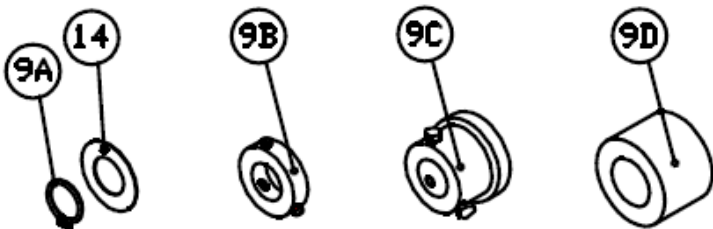


Fig. 3B



1	Motor fan	14	Seal washer	28	Conical gasket
2	Fan cover	15	Tab	29	Threaded sleeve
3	Front bearing	18	Capacitor (single-phase pumps only)	30	Hex head screw
4	Pump flange			31	Hex head hollow screw
5	Counterflange	19A	Toggle switch (series EEM only)	61	Rear guard
6	Brush holder			62	Rear bearing
7	Brush	19B	Rotary switch (other single-phase and three-phase series)	63	Casing with stator
8	Counterflange gasket			64	Shaft with rotor
9A	Stainless steel Seeger ring	20	Inverter box	65	Rear internal part
9B	Stainless steel seal ring	21	Terminal box	66	Front internal part
9C	Brass seal ring	22	Terminal block	67	Seal
9D	Seal spacer	23	Stud	67A	Mech. seal rotating part
10	Pump body	24	Cable clamping bracket	67B	Mech. seal fixed part - counter-face
11	Pump cover	25	Straight fitting		
12	O-ring	26	Curved fitting	67C	Mech. seal fixed part - shroud
13	Impeller	27	Ring nut	68	Motor seal

Tab .B

Fig. 4

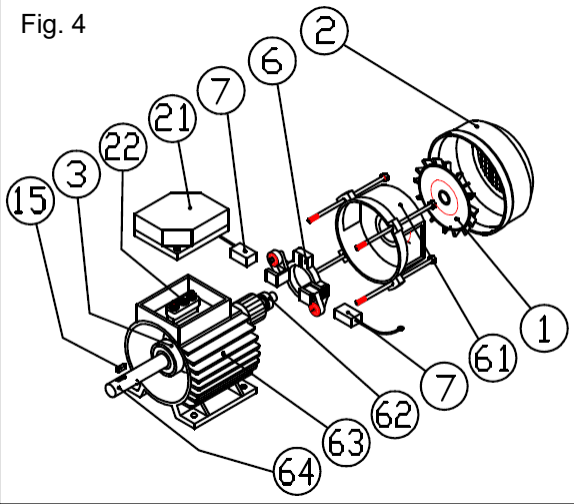


Fig. 6

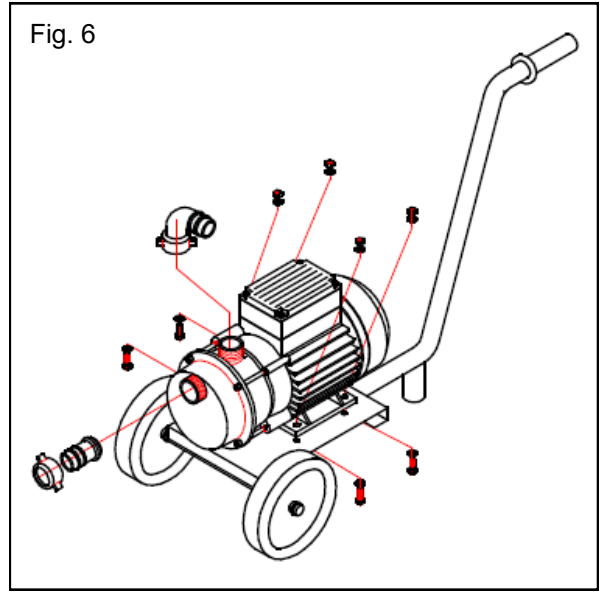


Fig. 5

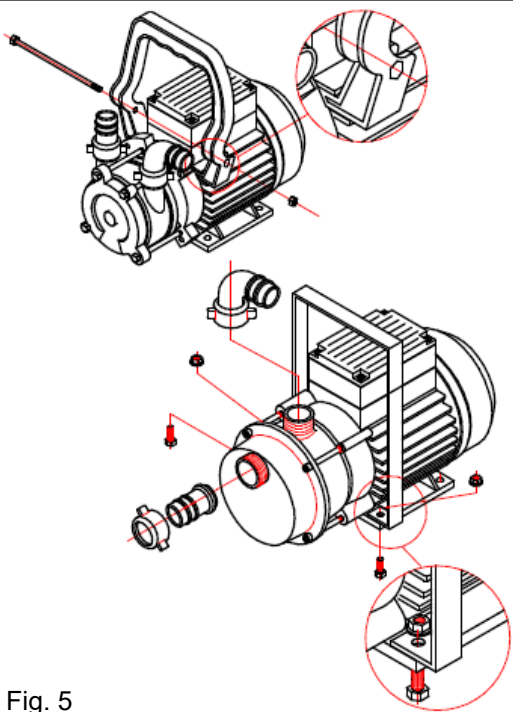


Fig. 8

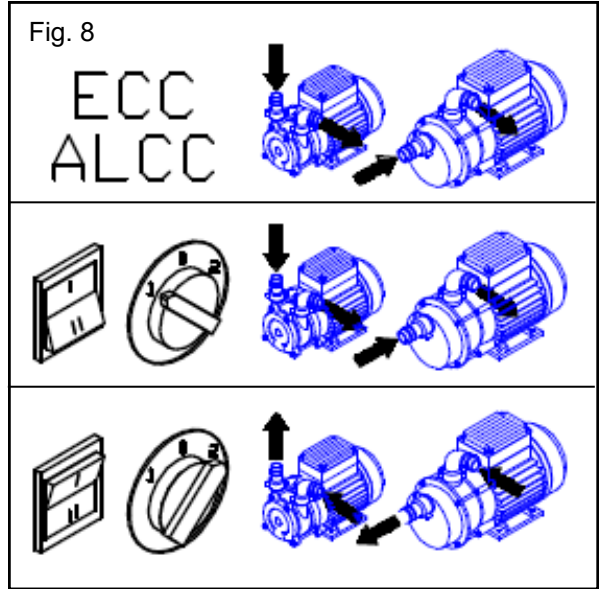


Fig. 7

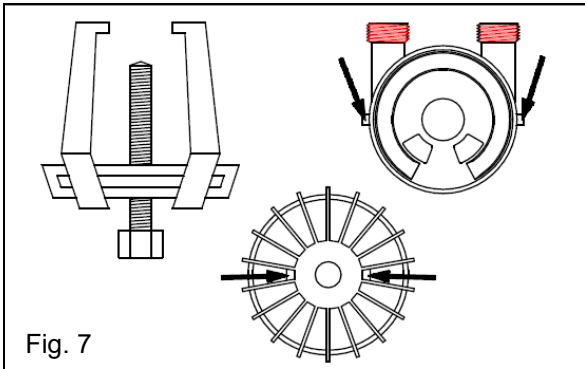


Fig. 9

