

**SELF SERVICE MANAGEMENT 2018**

# **SOFTWARE**

Installation

use and maintenance manual for the main software



**SELSERVICE**<sup>®</sup>  
M A N A G E M E N T  
**2018**

## GENERAL WARNINGS

### IMPORTANT WARNINGS

For operators' safety and to prevent any damage to the distribution system or to hardware devices, the instruction manual must be fully read and understood before carrying out any operation on software applications for the Self Service Management product range. The company rejects any responsibility due to malfunctions or damage coming from a missed or incomplete knowledge of this manual.

### Storage of the manual

This manual must always be used as a reference for all topics. The final user and the skilled technicians authorised for installation, use and maintenance of the software must always be able to read it at any time.

### Notes about validity

This manual was created with the utmost care. Nonetheless, involuntary omissions or inaccurate content or procedures might be present. PIUSI S.p.A. rejects any responsibility for the validity of the contents of this document or for changes it might undergo over time, for example with software and dedicated device updating and improvements. The illustrations provided mainly refer to the software configured in the English version and might not correspond to the displayed versions, also because of further version updates.

### Reproduction rights

All reproduction rights of this manual are reserved to PIUSI S.p.A. Text, illustrations and layout of the document cannot be used in other publications unless receiving written consent given by PIUSI S.p.A.

### Technical service

PIUSI S.p.A. technical service can be contacted by all customers at the following addresses:

Telephone: +39 0376 534561

E-mail: [customercare@piusi.com](mailto:customercare@piusi.com)

© PIUSI S.p.A. This manual belongs to PIUSI S.p.A. The reproduction of all or parts is prohibited.

Version of 09/2016

## Notice

If the Self Service stations are connected to the site using a PW-LAN/PW-WIFI adapter, the Self Service Management 2018 requires the following ports to be open in the Windows Firewall for correct operation:

TCP ports: 12345.

UDP ports: 12350.

The ports are usually open while installing the software.

In case of malfunctioning, ensure that the Firewall rules are configured in the right way.

## CONTENTS

1. INTRODUCTION.....	4
2. TECHNICAL SPECIFICATIONS.....	5
2.1. SYSTEM REQUIREMENTS .....	5
3. INSTALLATION .....	6
3.1 CONTENT OF THE KIT.....	6
3.2 SOFTWARE INSTALLATION.....	6
3.3 HARDWARE INSTALLATION CONNECTION SET-UPS.....	12
4. FIRST USE .....	17
4.1 FIRST ACTIVATION.....	17
4.2 UPDATING TO SELF SERVICE MANAGEMENT 2018.....	18
5. LOGIN and INTERFACE.....	22
5.1 LOGIN.....	22
6. SITE .....	25
6.1 OVERVIEW.....	25
6.2 DOWNLOADING DATA FROM MANAGER KEY.....	28
7. REPORT .....	29
7.1 OVERVIEW.....	29
8. SETTINGS.....	31
8.1 OVERVIEW.....	31
8.2 GENERAL CONFIGURATIONS.....	31
8.3 SITE OWNER DATA.....	34
8.4 USER DATA MANAGEMENT .....	35
8.4.1 USER PRIVILEGE LEVELS.....	37
8.5 DATABASE BACKUP CONFIGURATION .....	38
8.6 DATA MIGRATION.....	40
8.7 EXPORTING DISPENSING OPERATIONS.....	41
9. SOFTWARE INFORMATION, PRODUCT REGISTRATION AND UPDATES.....	43
9.1 SOFTWARE INFORMATION.....	43
9.2 PRODUCT ACTIVATION.....	44
9.3 SOFTWARE UPDATES.....	45

## 1. INTRODUCTION

This manual describes the operation of the Self Service Management 2018 software permitting the management of dispensing data collected from a maximum number of 16 Self Service stations.

This software allows the user to save each individual dispensing operation performed from the Self Service stations to PC and view detailed reports.

The Self Service Management 2018 components are:

1. SELF SERVICE MANAGEMENT 2018 SOFTWARE, the software application that permits desk-based management and data processing, which includes:
  - SERVER (installed as SSMSERVICE system service), the software that dialogues with each device without any intervention by the operator, collecting and continuously processing all system data and guaranteeing the synchronisation of information
  - CLIENT, the software to which users can connect for interfacing with the system and carrying out all operations for scheduling and monitoring work and the site.
2. PIUSI FUEL DISPENSERS, the series I.O range of fuel dispensers supported by the software:



Self Service FM



Self Service MC



MC BOX



CUBE MC

## 2. TECHNICAL SPECIFICATIONS

### 2.1. SYSTEM REQUIREMENTS

Monitor resolutions	1280-700
CPU:	Intel® Pentium® 4 or AMD Athlon® 64 processor (2 GHz or higher)
RAM:	2 GB
Free space on Hard Disk:	20 GB
Operating system:	Windows VISTA SP2, Windows 7 SP1, Windows 8, Windows 8.1, Windows 10
Database:	Microsoft SQL 2012 R2 SP2 Express (included in the installation)

### ADDITIONAL REQUIREMENTS

An internet connection is required for software operation in the WEB version, to activate the product and ensure constant updates to new versions.

**WARNING:**

*The system min. requirements might undergo changes over time, following the continuous development and improvement of the software.*

### 3. INSTALLATION

#### 3.1 CONTENT OF THE KIT

The SELF SERVICE MANAGEMENT 2018 software can be purchased with a single licence and is distributed as follows:

**KIT WITH USB KEY** - The software comes in a package with a single USB key for storage. The USB key contains the installation file *setup.exe*. It is recommended to pay maximum attention to the filing of serial numbers written on the labels of the package and on the USB key. Note that the software can be used only when the USB key is connected to the PC. Do not tamper with or remove the content of the key.

**KIT WITH WEB DOWNLOAD** - the software is supplied through the service portal of the PIUSI client. Accessing the services for the clients in the *piusi.com* website, you can download the installation kit and manage the relevant user licences and activation codes.

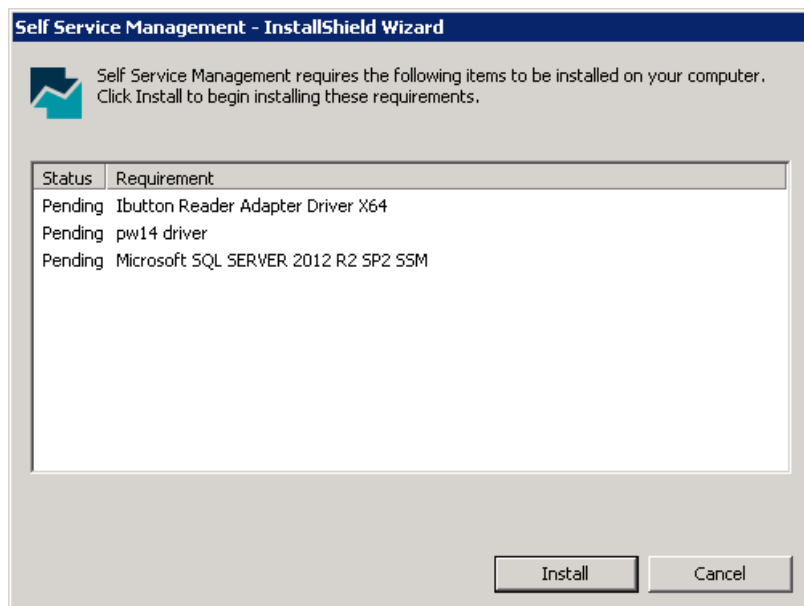
#### 3.2 SOFTWARE INSTALLATION

Run the *setup.exe* file to proceed.

##### REQUIREMENT CHECK

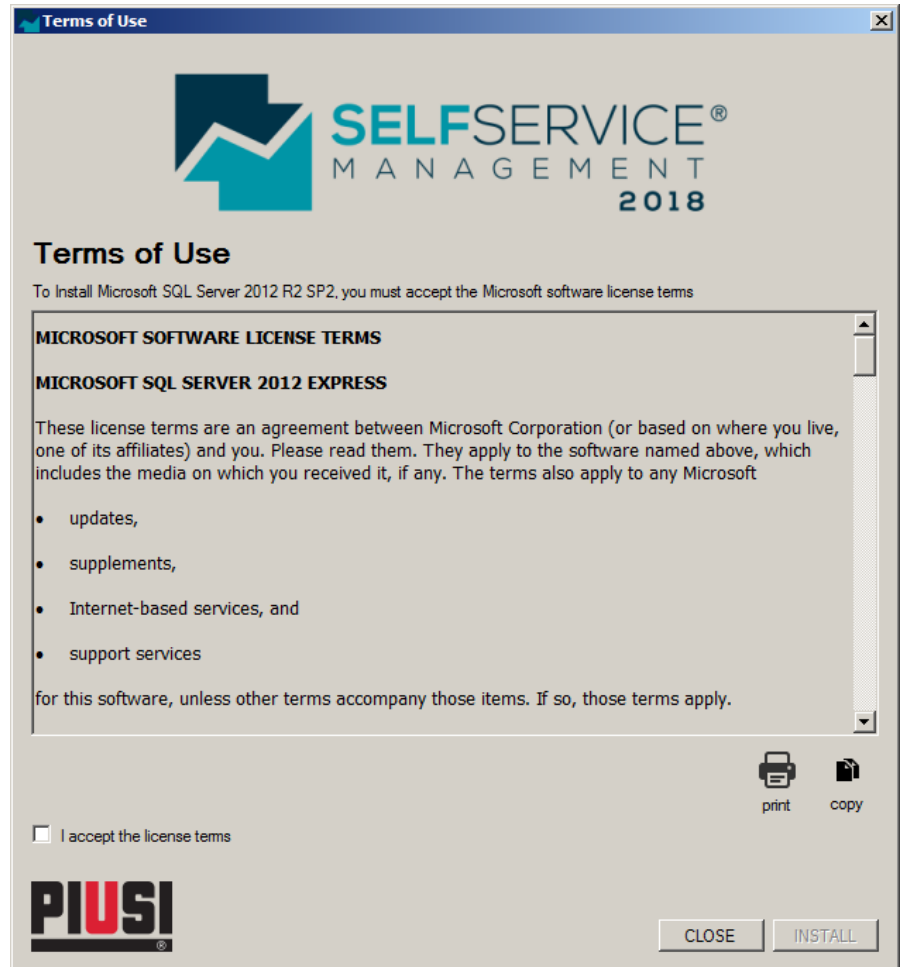
When the procedure is started, the requisites for correct use of the software are checked. The iButton reader drivers, PW-14 adapter drivers and Microsoft SQL Server 2012 R2 SP2 Express database should be installed.

For correct installation, connect the PW-14 adapter and iButton reader only after installing the drivers.



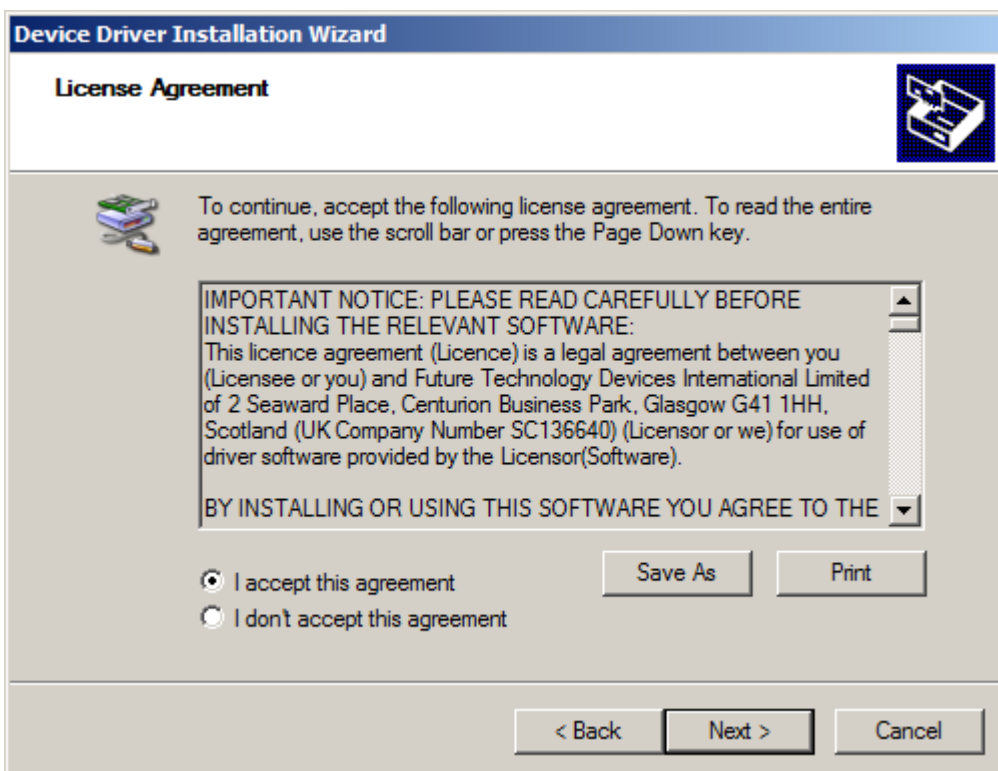
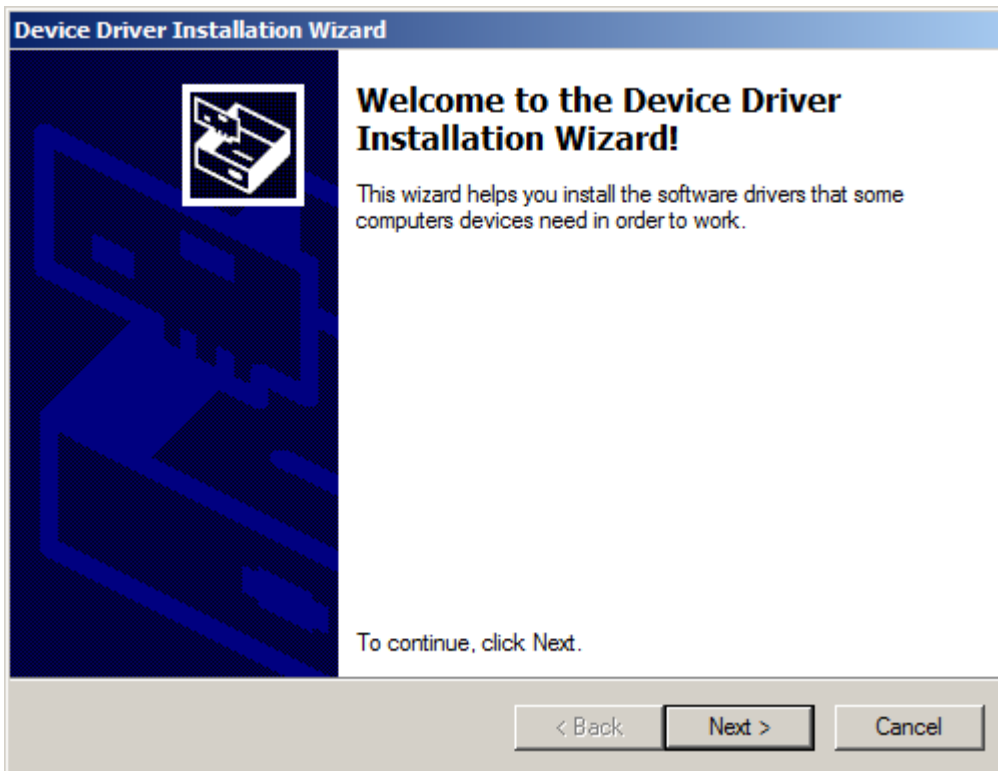
## MICROSOFT SQL SERVER 2012 R2 SP2 INSTALLATION

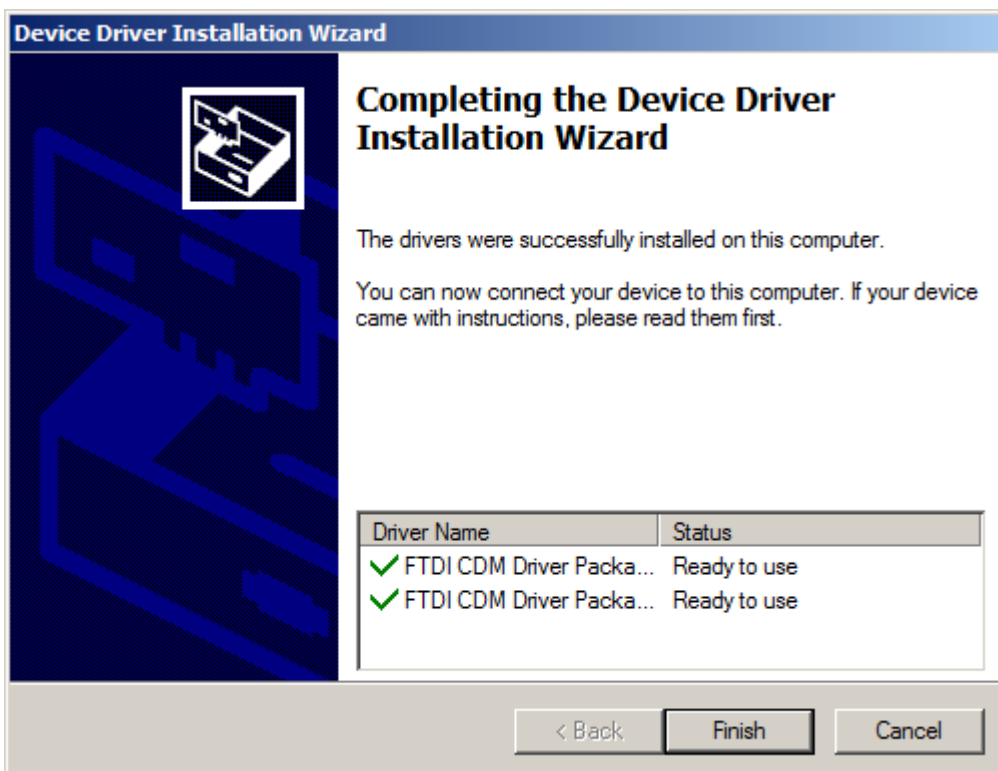
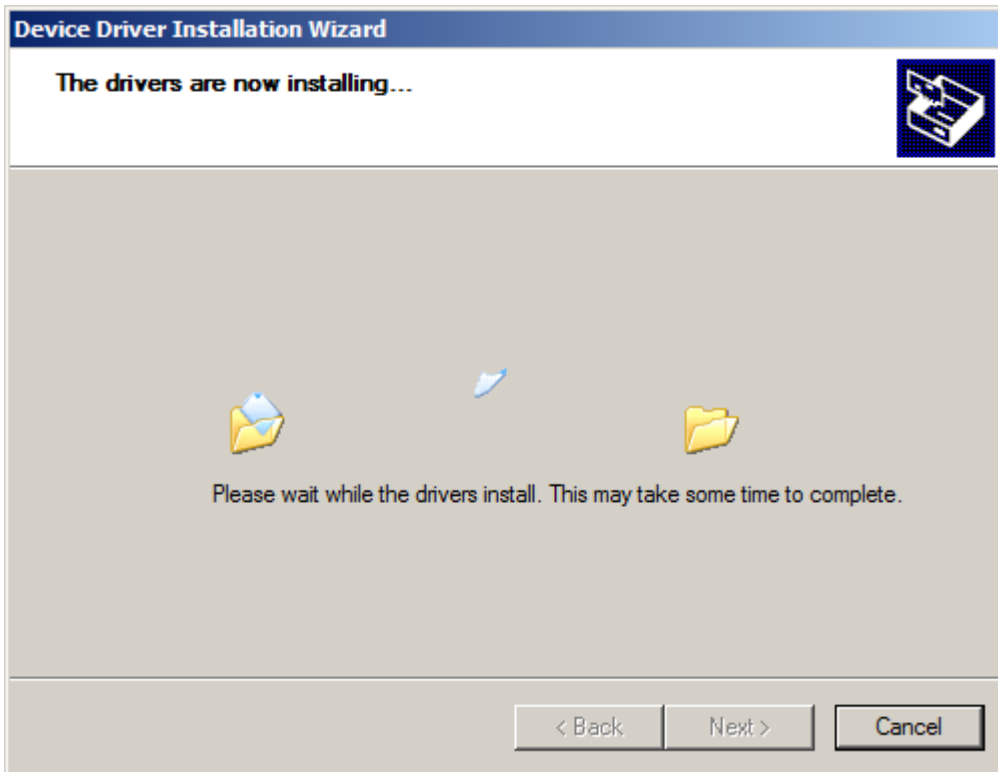
Accept the use conditions of Microsoft SQL SERVER 2012 R2 SP2 Express to install the PIUSI database necessary for using the software. The installation may require a few minutes.





## PW-14 ADAPTER DRIVER INSTALLATION

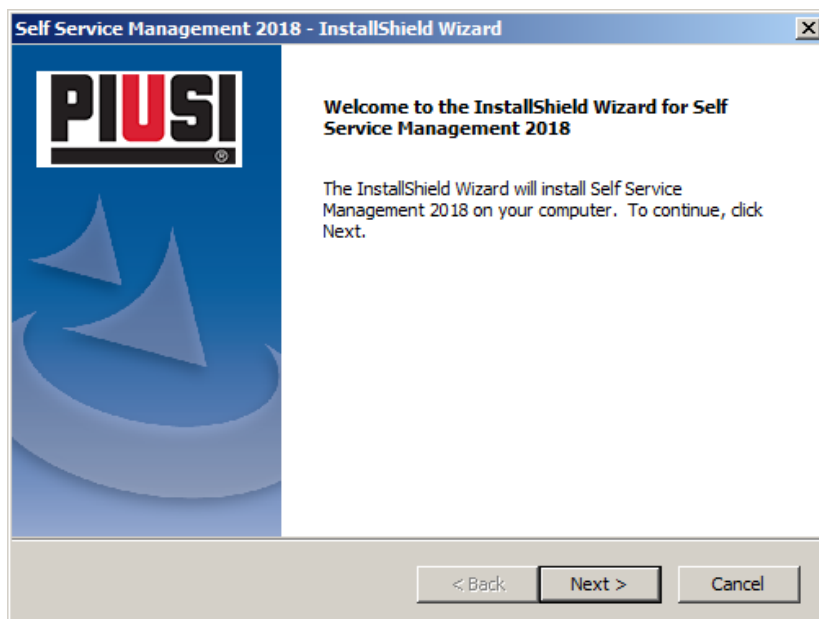




After installation, the PW-14 adapter can be connected to the PC.

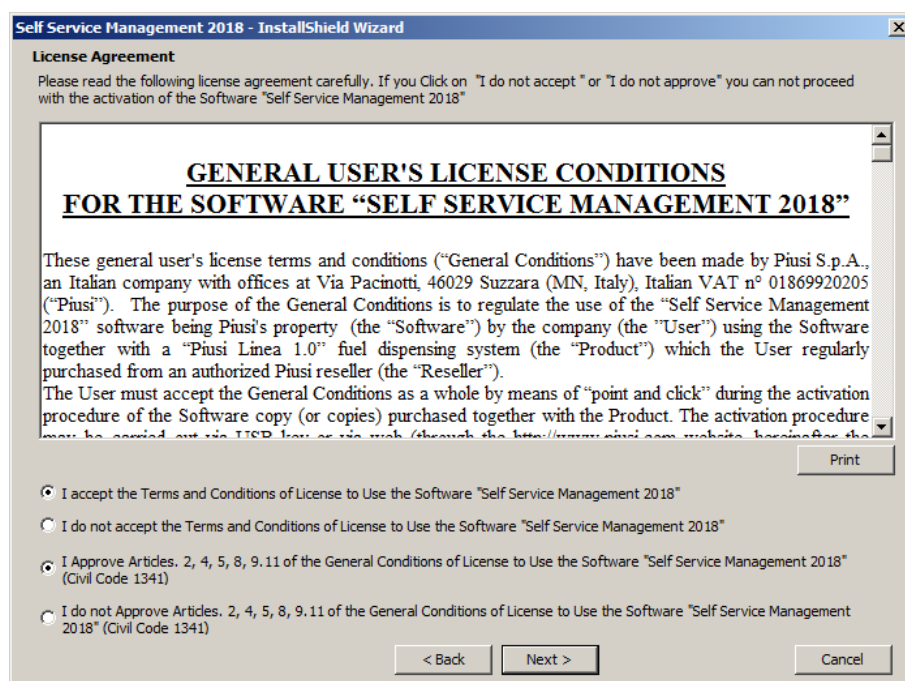
## START OF SELF SERVICE MANAGEMENT 2018 INSTALLATION

The following screen informs the user about the installation operations he/she is going to authorise. Press NEXT to continue or CANCEL.



## GENERAL USER'S LICENSE CONDITIONS

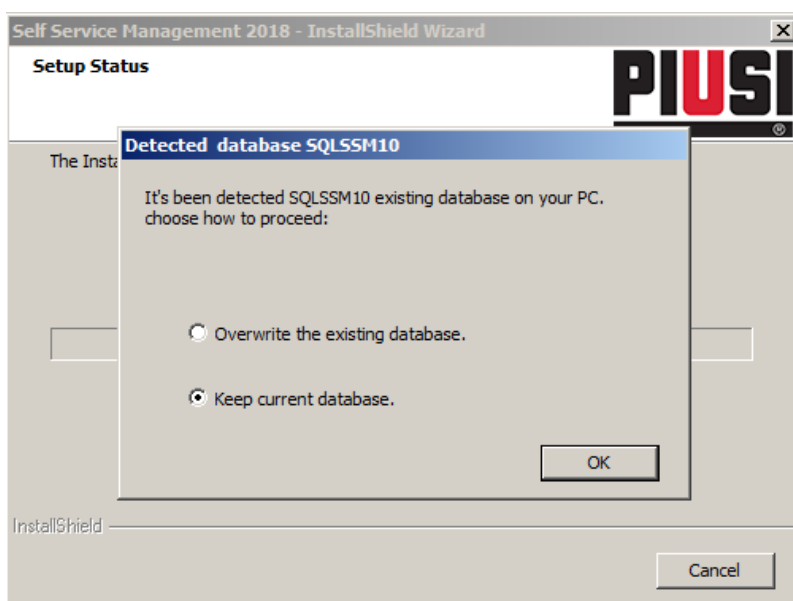
Read the terms of the General User's License Conditions for the software Self Service Management 2018. To continue installation, you need to accept the conditions and approve the articles as required.



## INSTALLSHIELD WIZARD

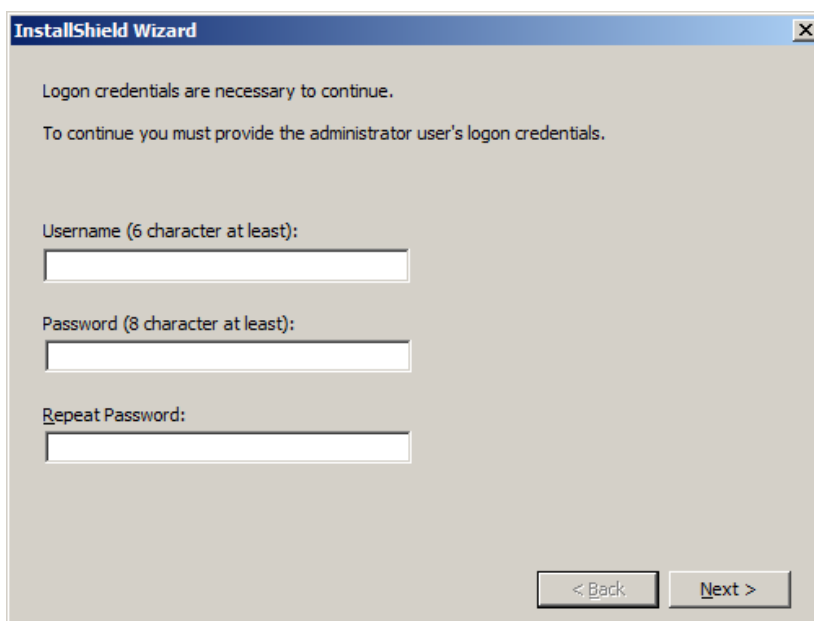
Confirm the selections to continue with the final installation and file copy.

In case of a future installation of Self Service Management 2018 you need to decide if you want to keep the current database or restart with an empty one. Caution, if you want to overwrite the previous database and load a new, empty one, all previous data is lost and can be recovered only through a backup.



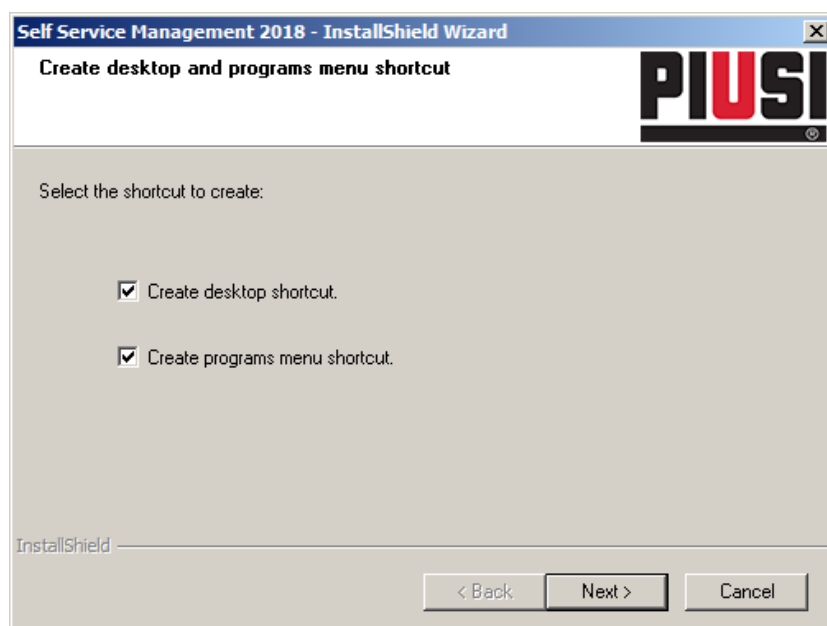
## CREDENTIAL LOGON

Provide a username and a password for the administrator to be used as credentials at the logon for the startup. Other users can be easily created after accessing the software.



## SHORTCUT PREFERENCES

Define which software shortcuts you want to create in your site.



## CONFIRM INSTALLATION AND RESTART

After the procedure, the interface confirms the operations asking the user to restart the computer before running the program. It is always advisable to restart the PC at the end of the installation process.

NOTE: Software can be uninstalled using the OS functions. To uninstall the software, just press control panel -> Programs ->Uninstall a program.

## 3.3 HARDWARE INSTALLATION CONNECTION SET-UPS

Data can be downloaded from the Self Service Stations in three different ways:

1. Via RS485 serial connection (using PW-14 adapter):  
The network connection is set up using a twisted pair cable (see RS485 standard). Screening is not, generally speaking, indispensable. If the cable features screening however, it is advisable to connect it to the ground wire, in the Self Service junction box. (See connection set-ups 1A and 1B.)

**Diagram 1A:  
Self Service FM and MCFP connection**

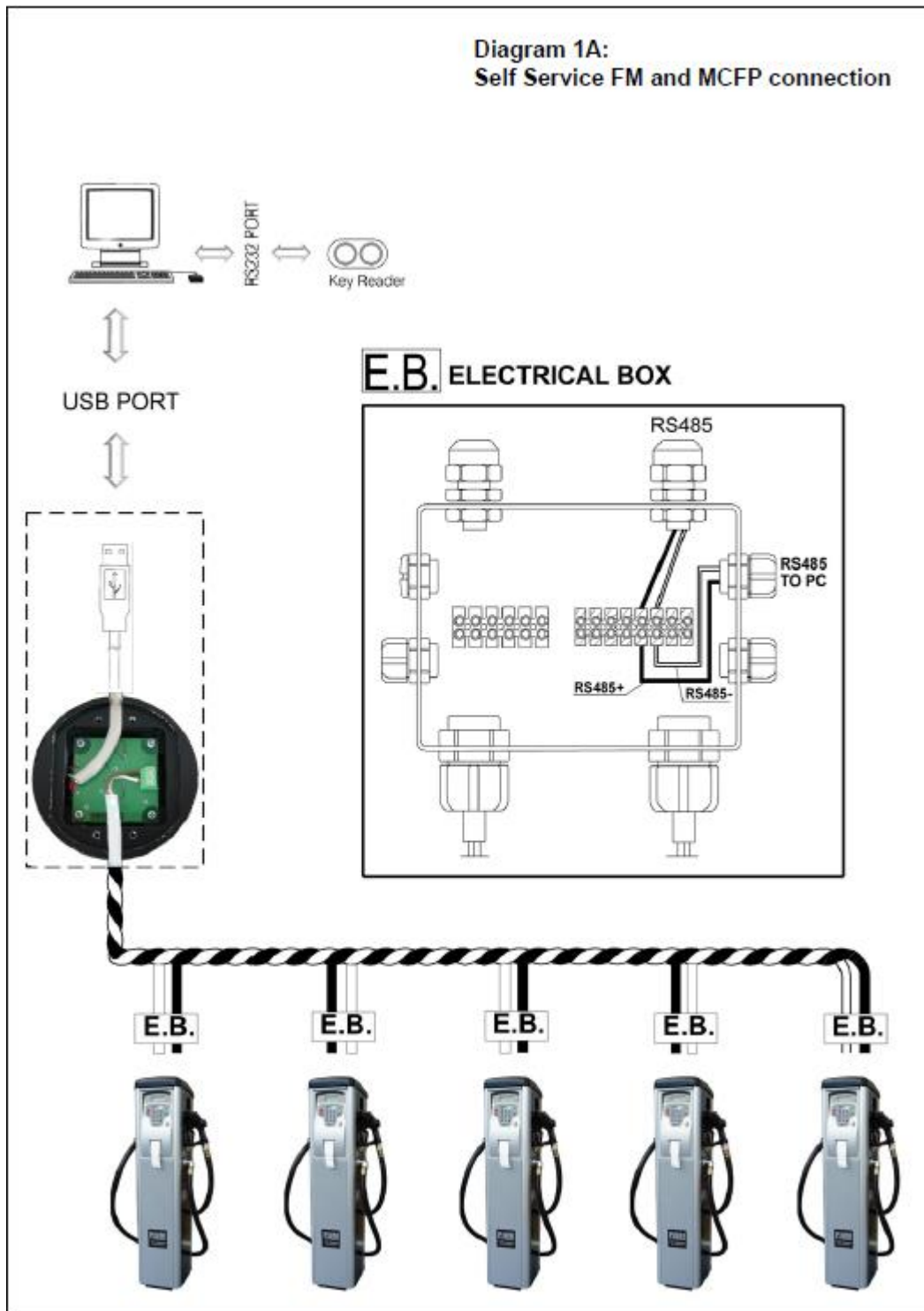
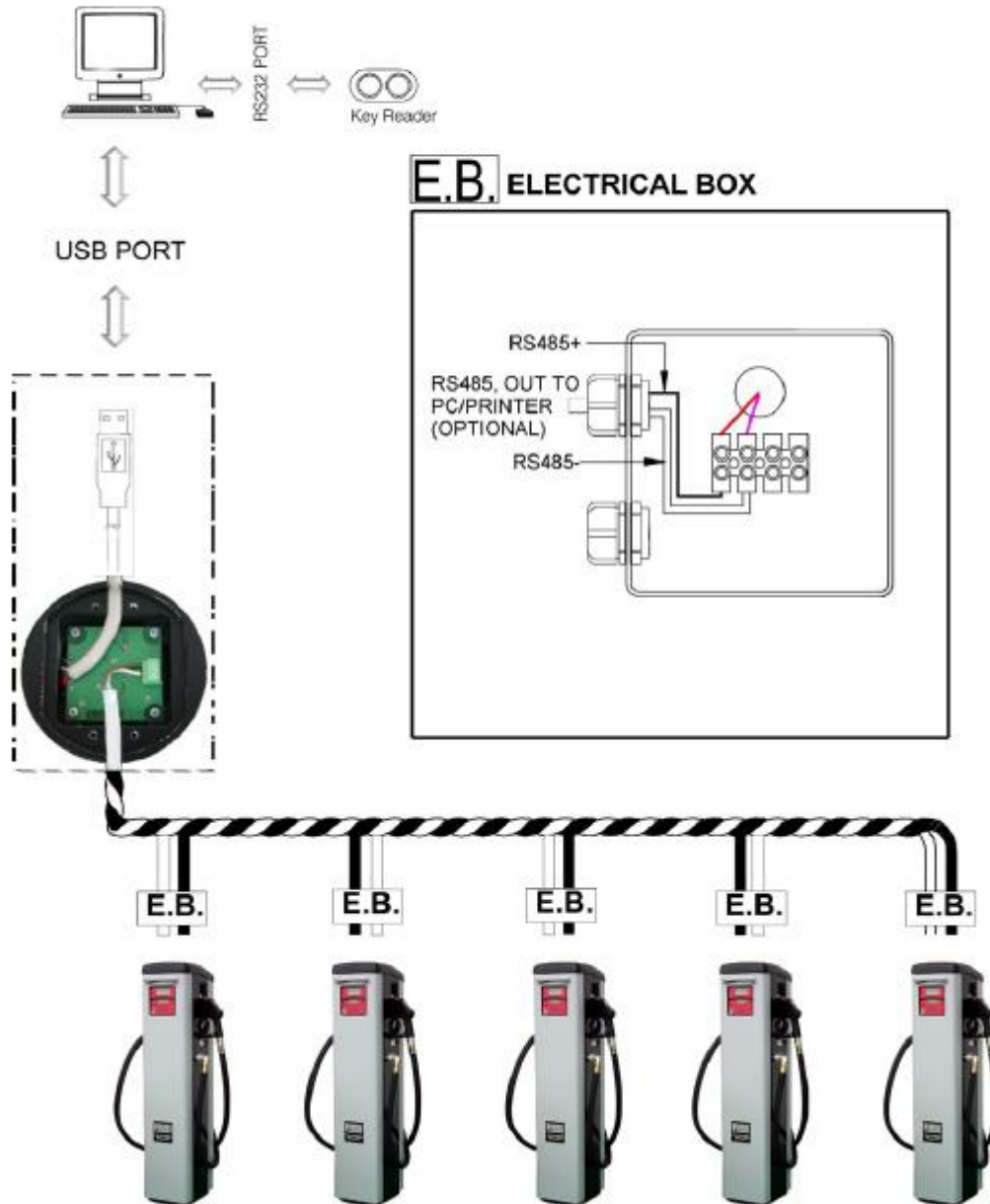
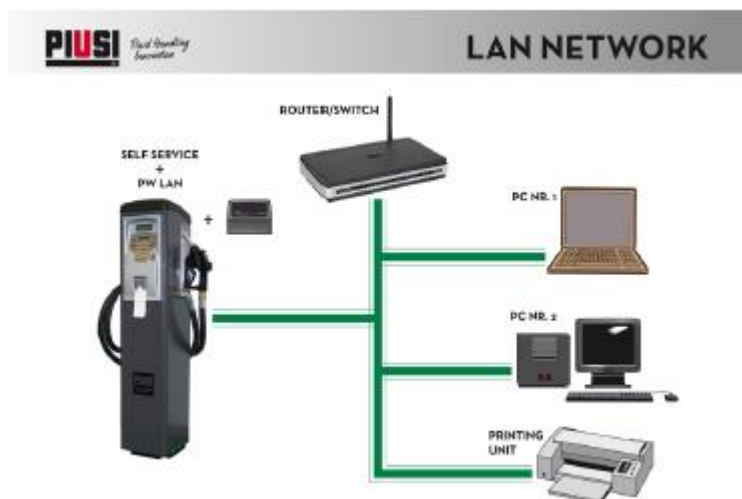
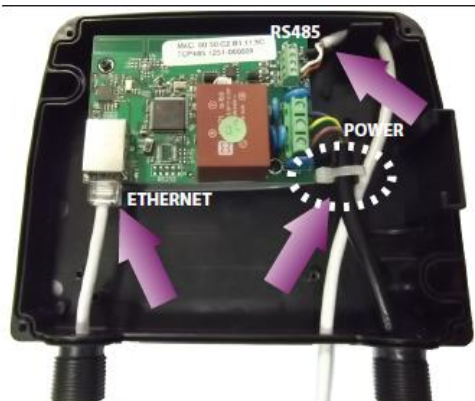


Diagram 1B:  
Self Service MC connection



2. Via Ethernet connection (using PW-LAN/PW-WIFI adapter): Connect the fuel dispenser controller to the PW-LAN/PW-WIFI adapter using a RS485 cable and then, after configuring the PW-LAN/PW-WIFI correctly, wire the device within your network using an Ethernet cable (with PW-LAN) or connect it via Wi-Fi to your network's access point (with PW-WIFI).

### Set-up with PW-LAN



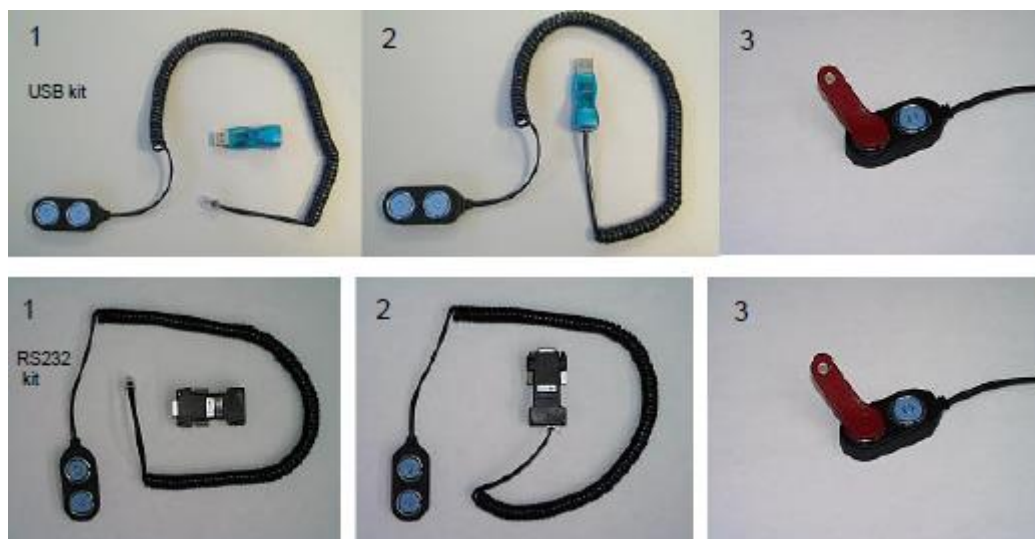
### Set-up with PW-WIFI



Please refer to the configuration manuals for the PW-LAN and PW-WIFI equipment.



3. Via electronic key (MANAGER KEY) supplied to the fuel dispenser site owner: Use the key reader connected to the PC via USB or RS232 adapter to read the data on the MANAGER KEY.



With the first two methods, the PC cyclically queries the stations connected to the networks, which respond with the data on all the dispensing operations stored.

Where it is inconvenient to lay wiring, the dispensing operations can be “downloaded” from the station using the MANAGER KEY. The MANAGER KEY is a storage device where the dispensing operations downloaded from the fuel dispensers that must be transferred to the PC for processing are saved.

**WARNING:**

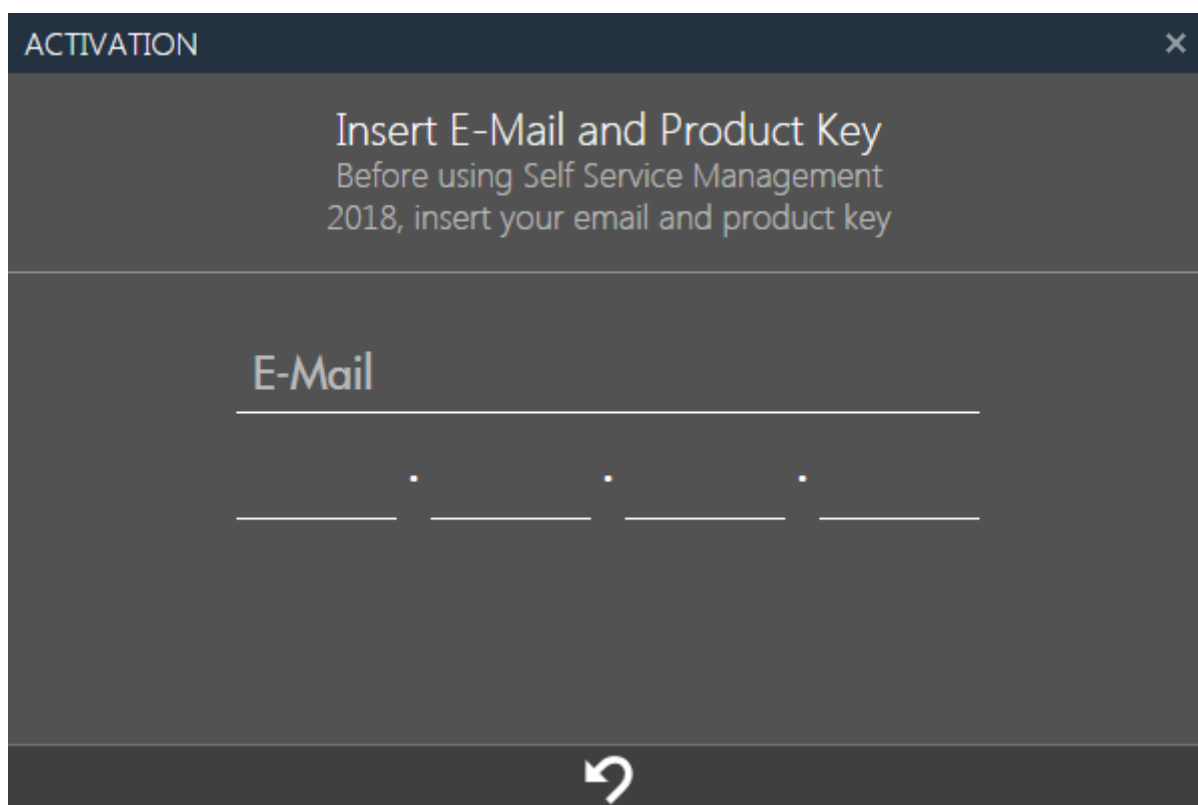
*Only the data from one fuel dispenser at a time can be stored on the MANAGER KEY. It is not possible to download data to a MANAGER KEY containing data from another fuel dispenser.*

## 4. FIRST USE

### 4.1 FIRST ACTIVATION

Once installed, run the software using the  icon on the desktop. At the first activation, the product code and the e-mail address used for registering the product on the portal are requested.

See illustration below:

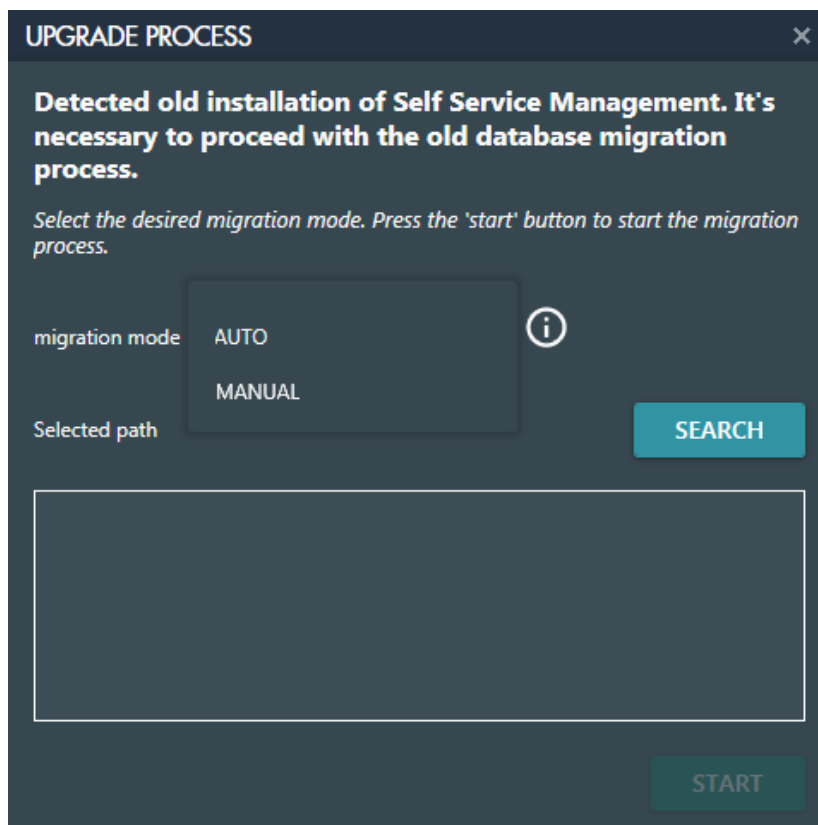


In the case of the USB version, the code to enter is printed on the package. In the case of the WEB version, it is sent by PIUSI by e-mail.

## 4.2 UPDATING TO SELF SERVICE MANAGEMENT 2018

If, at the first activation of Self Service Management 2018, the old version of the 'Self Service' software is detected on the PC, an update procedure is envisaged, including:

1. DATA MIGRATION - Procedure to import the data in the database (Self.mdb) of the old version of software to the new database. In detail:



The Access files Self.mdb of the old database containing the data for migration must be indicated in order to start migration. There are two ways of selecting the files:

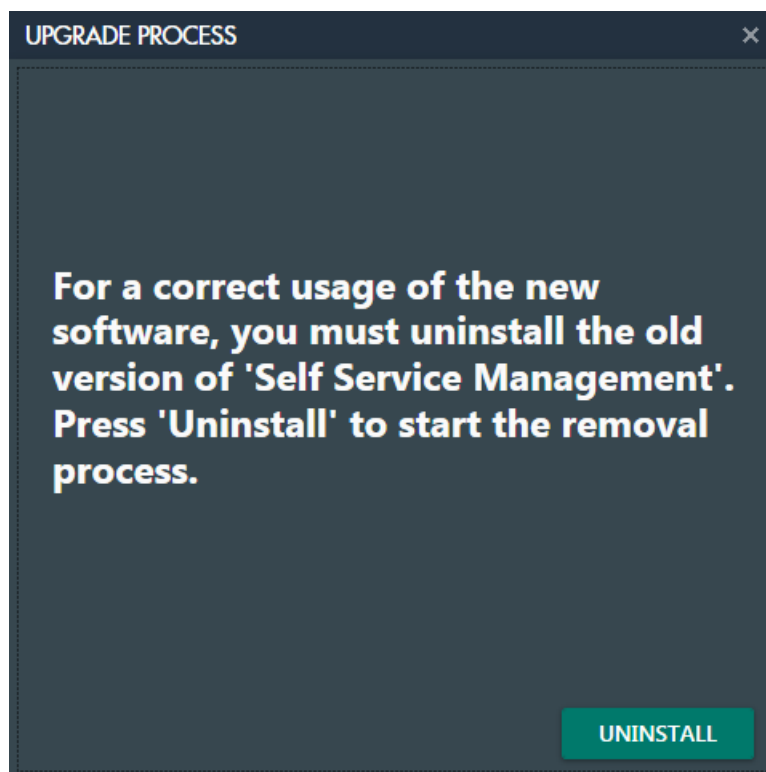
- **AUTO** - Pressing the 'SEARCH' button launches an automatic procedure that will search for the Self.mdb files present with a specified path.
- **MANUAL** - Press the 'SELECT' button to select the Self.mdb files to migrate manually.

After selecting the files for migration, press 'START' to proceed with migration.

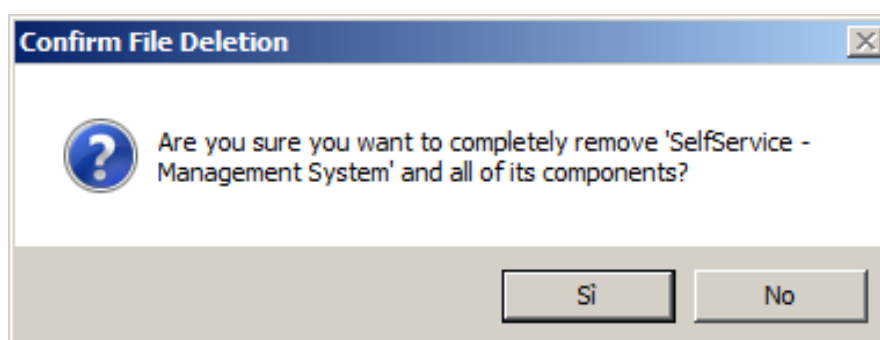
### **WARNING:**

*Depending on the quantity of data for migration, the migration process may last several minutes. Wait for the end of the process without interrupting it.*

2. UNINSTALLING THE OLD SOFTWARE – After the migration procedure has ended correctly, the old version of 'Self Service' must be removed. In detail:

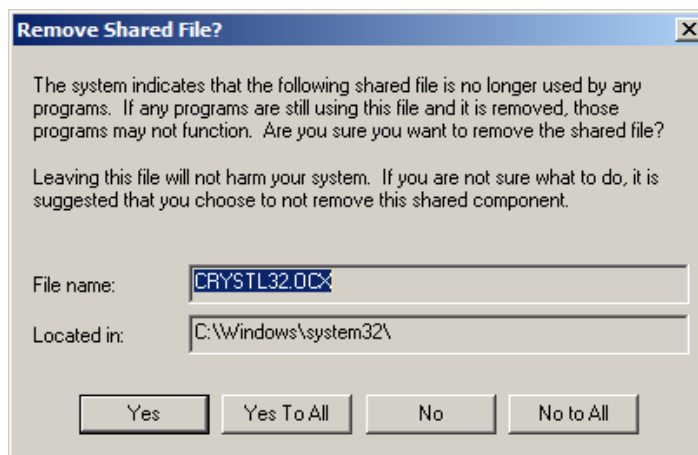


Press the UNINSTALL button to start the removal process:

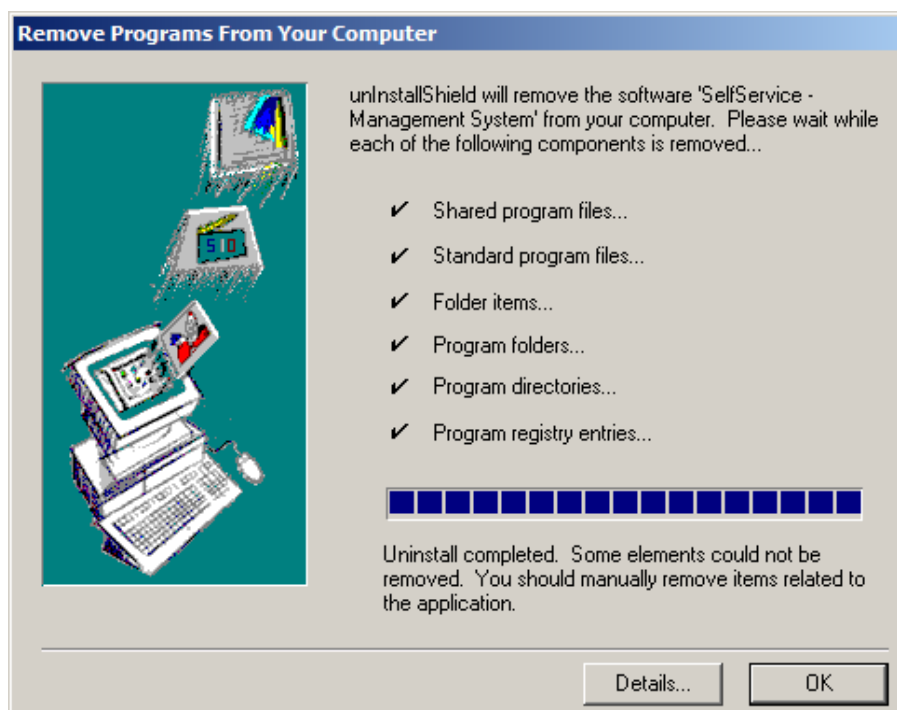


Select the 'YES' option.

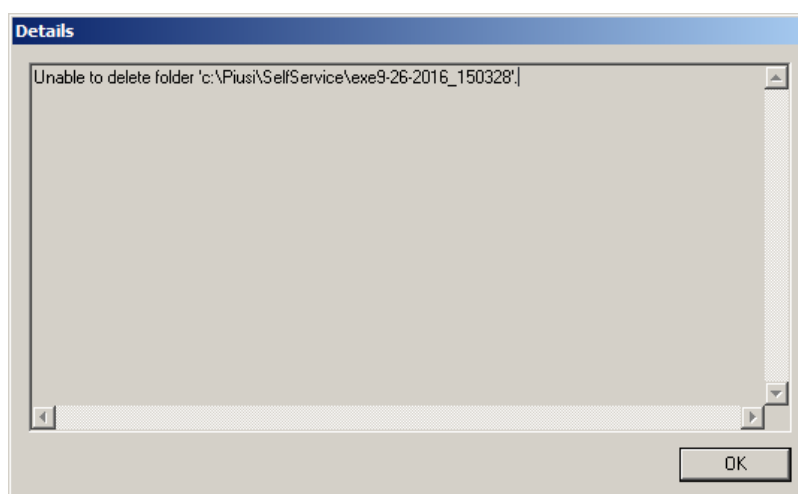
At this point, the screen asking whether you want to uninstall the files shared with other applications and no longer used appears. To avoid any kind of malfunction, select the option 'No to All'.



After confirming, the removal procedure will be launched. At the end of the process, press the 'OK' button to close.



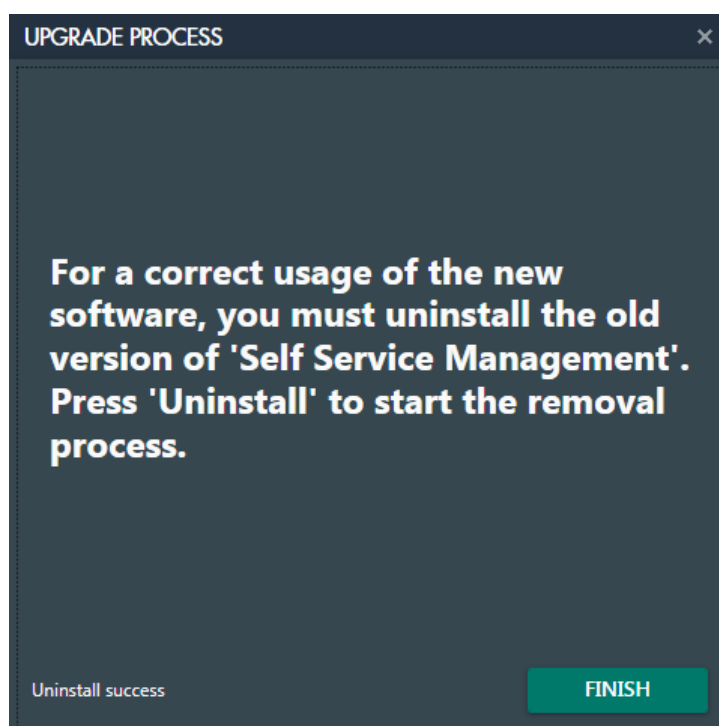
Press the 'DETAILS ...' button to see which files could not be removed automatically and that must be removed manually if you wish to uninstall the 'Self Service' completely.



**WARNING:**

*The procedure for uninstalling the old software deletes the Self.mdb file, which contains all the data stored by the 'Self Service' software. Before proceeding with removal, ensure that your data has been migrated correctly to the new database.*

If uninstalling ends successfully, press the FINISH button to start using the software.



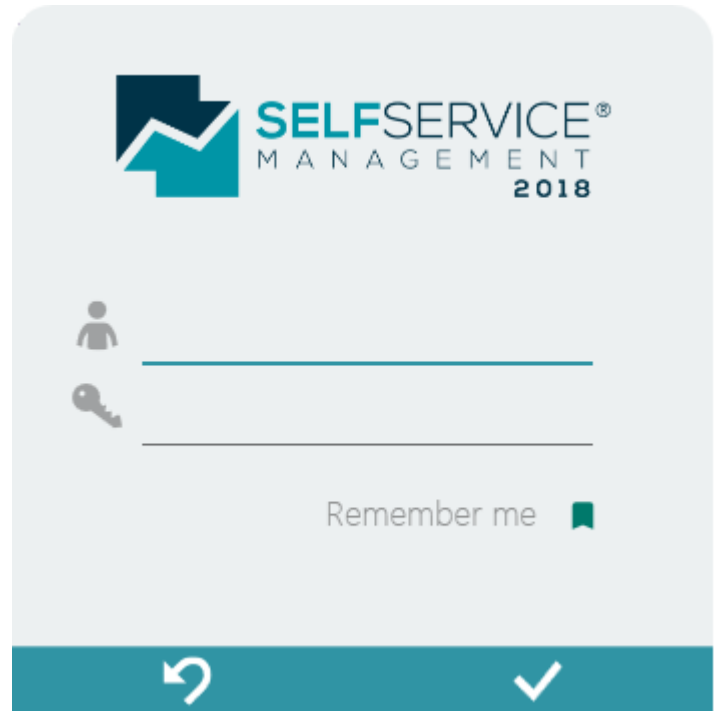
## 5. LOGIN and INTERFACE

### 5.1 LOGIN

To access the software, double click on the Self Service Management icon on the desktop. After a few seconds, the login interface on the right is displayed.

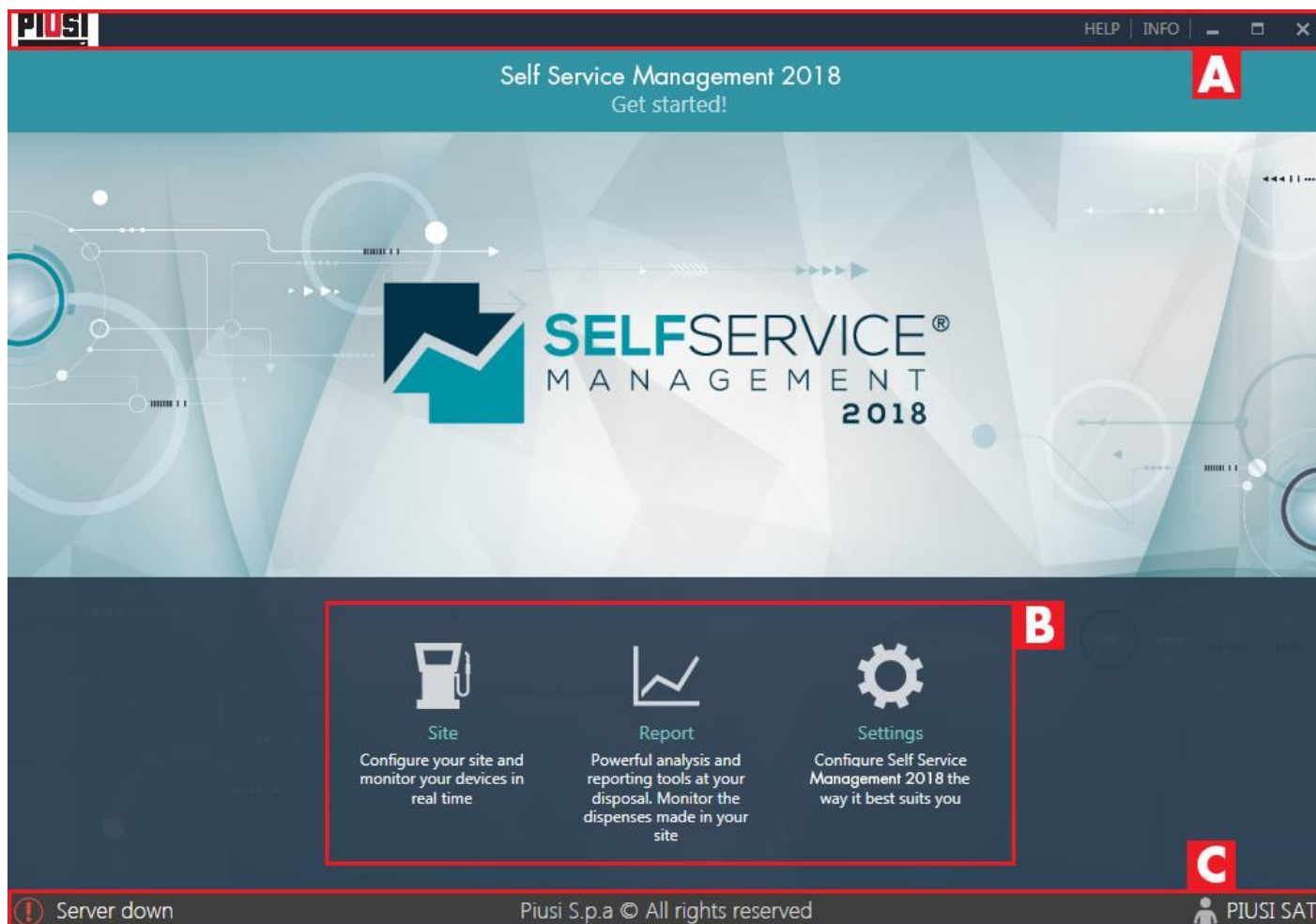
Enter your personal details: username and password, then press Enter in the keyboard or LOGIN button.

The “Remember me” button can be used to help the user to remember the password while logging in. The password reminder is effective from the second login.



## 5.2 INTRODUCTION TO THE INTERFACE

The interface of the Self Service Management 2018 Software has been developed to offer a simple utilisation experience, to improve daily work without complicated manoeuvres. The basic parts to know before reading the manual in all its sections are the following:



- A. **HEADING** - shows the company logo and, on the right side, the INFO button used to enter the sub-menu for displaying the software version and license information, activating the product and checking for new updates (see chapter 9). The HELP button for consulting the software user manual (the manual can be opened by pressing the F1 button on the keyboard).



B. MAIN MENU - The menu is a fundamental part of the software, used to scroll through its functions. Let's analyse each item from left to right.

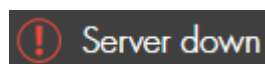
- SITE - the menu item for accessing site management, where the fuel dispensers connected and monitored in real time are indicated.
- REPORT - the menu item for accessing system reports, where dispensing reports can be displayed.
- SETTINGS - the menu item for accessing the software configuration options, to change language, units of measurement, to enter the site owner details, manage the program user data and schedule the database backups.

C. FOOTER - the program footer showing:

- o server status



server on and perfectly working



server off.

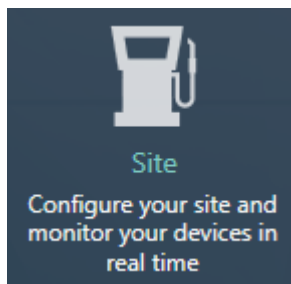
**WARNING:**

*For the correct operation of the system the server must always be on; if the server remains off for too long incorrectly, check that the SSMSERVICE system service is present and active.*

- o the name of the connected user - name of the user authenticated for the current session.

## 6. SITE

### 6.1 OVERVIEW



The site can be configured from the SITE section of the program, which can be accessed by pressing the menu icon shown to the side. Here you can add, modify and delete site devices and monitor the status of each Self Service station connected in real time. Up to a maximum of 16 fuel dispensers can be managed. The type of communication protocol used to dialogue with the devices is to be selected in the 'GENERAL SETTINGS' section (see chapter 8.2).

The screenshot displays the 'Self Service Management 2018 Site' interface. It features a grid of 16 numbered slots for monitoring devices. Slots 1, 2, and 3 contain images of specific devices: a MIC BOX (DEVICE\_207453), a Self Service FM (DEVICE\_409006), and a Cube MC (DEVICE\_512237). Slots 4 through 16 contain dashed circles with fuel dispenser icons. A red box labeled 'A' encompasses the entire grid, and a smaller red box labeled 'B' encompasses slots 10, 11, and 14. The bottom status bar shows 'Server down', 'Piusi S.p.a © All rights reserved', and 'PIUSI SAT'.

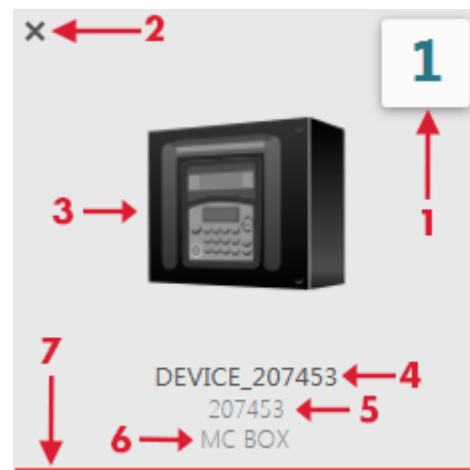
In detail:

A. FUEL DISPENSER MAP - list of the fuel dispensers added and monitored in real time.

Fuel dispenser detail:

1. SLOT NUMBER
2. DELETE FUEL DISPENSER - press the button if you want to remove the device from the site.
3. IMAGE
4. NAME
5. SERIAL NUMBER
6. MODEL
7. STATUS - operating status of the device monitored.

List of statuses for type of communication:



STATUS FOR COMMUNICATION TYPE	MANAGER KEY	PW-14	PW-LAN
<b>ACTIVE</b>	Management via MANAGER KEY does not envisage a direct connection between fuel dispenser and site, so its status will always be active.	Optimum communication on RS485 bus. Communication stable.	Optimum Ethernet communication. Communication stable.
<b>OFFLINE</b>	-	No communication. Fuel dispenser off or PW-14 adapter removed from PC.	No communication. Fuel dispenser off, network cable disconnected or incorrect PW-LAN TCP/IP configuration.
<b>BUSY</b>	-	Stable communication; user interacting with device.	Stable communication; user interacting with device.
<b>NO COMMUNICATION</b> 	-	-	No communication, but device accessible to the network. Device connected correctly to local network, but server cannot communicate with device controller. Check RS485 wiring.

B. EMPTY SLOT - press the slot to add a new fuel dispenser for monitoring. Indicate:

1. NAME - name chosen by user to identify the device.
2. SERIAL NUMBER - unique device identifier.
3. MODEL

9

**ADD NEW DISPENSER**

Device Name **1**

S/N **2**

Dispenser type  
Self Service FM **3** ▾

↶ ✓

**WARNING:**

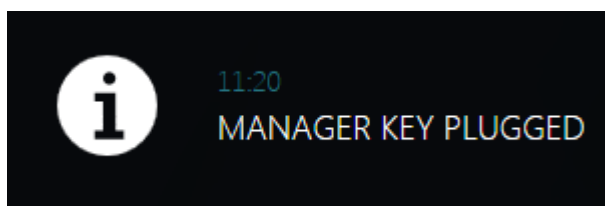
*The type of communication used to download data from the fuel dispensers is a global setting and must be indicated in the 'GENERAL SETTINGS' section (see chapter 8.2).*

## 6.2 DOWNLOADING DATA FROM MANAGER KEY

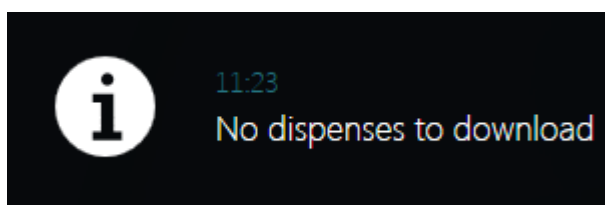
Before proceeding to download the data, ensure that you have registered the MANAGER KEY on each fuel dispenser (see 'Self Service' user manual), added each fuel dispenser in the software (see chapter 6) and configured the software to operate with 'MANAGER KEY' communication type (see chapter 8.2).

To download the data on the MANAGER KEY, place the key in the key reader and wait for it to be recognised by the software.

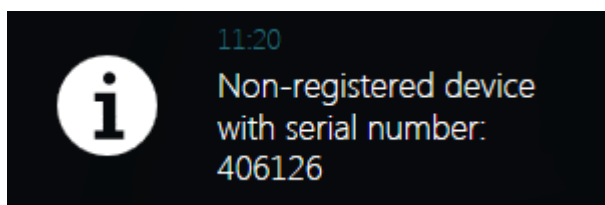
Possible statuses:



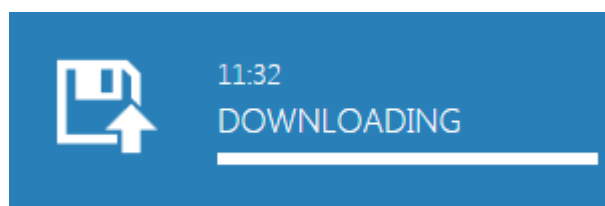
Key connected and recognised.



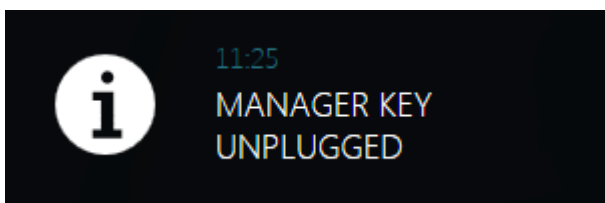
No data to download.



Key recognised but the data contained does not refer to any device registered in the site. The fuel dispenser must be added to the site (see chapter 6.1).



Key data downloading. The dispensing operations stored in the key are being downloaded. Leave the key inserted in the reader throughout the process.



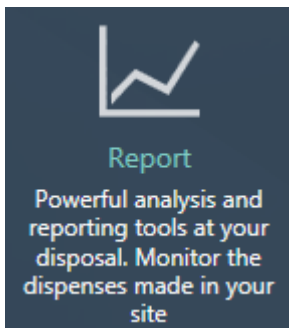
Key unplugged.

### WARNING:

*To download the data from the key, the Self Service Management 2018 software must be running and the key reader must be connected to the PC.*

## 7. REPORT

### 7.1 OVERVIEW



The REPORT section, which can be accessed by pressing the menu icon shown to the side, is the area where you can display and export the dispensing reports.

**Self Service Management 2018 Report**

Total amount dispensed from 11 Nov 2007 to 26 Sep 2016:  
**106214.22 Liters**

Year	Total Liters
2007	~10000
2008	~15000
2009	~5000
2010	0
2011	0
2012	0
2013	~10000
2014	~25000
2015	~45000
2016	~5000
<b>Total</b>	<b>106214.22</b>

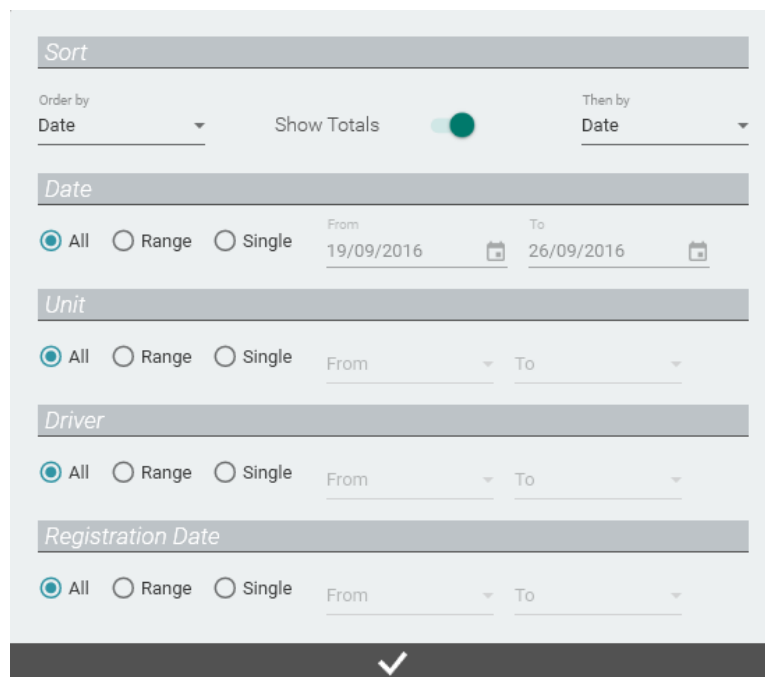
**6 JUN 2016** Total Liters **300.05**

Date	Hour	Unit	Driver	Reg. Number	Odometer	Quantity
6 Jun	14:09	DEVICE_207453	NOVOTNY	1463	0 Km	61.02 L
6 Jun	14:03	DEVICE_207453	BURES JAN	1002	0 Km	7.35 L
6 Jun	14:00	DEVICE_207453	BERANEK	1001	0 Km	7.50 L
6 Jun	13:47	DEVICE_207453	JINDRA	1022	0 Km	28.03 L
6 Jun	13:43	DEVICE_207453	HNILICKA	1057	0 Km	60.19 L
6 Jun	13:39	DEVICE_207453	PLUHAR	1495	0 Km	24.38 L
6 Jun	13:30	DEVICE_207453	AUBUS	1318	0 Km	8.15 L
6 Jun						

Server down | Piusi S.p.a © All rights reserved | PIUSI SAT

In detail:

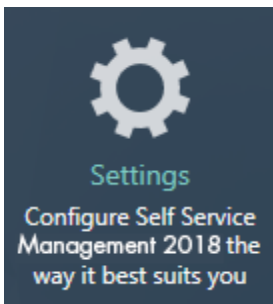
A. FILTERS - dispensing filtering panel.



1. SORTING - dispensing operations can be ordered in two different ways and grouped (according to the first sort criterion) by enabling the 'Show Totals' option.
  2. FILTERING - dispensing operations can be filtered by DATE, UNIT (fuel dispenser), DRIVER, REGISTRATION DATE (number).
- B. CHART - bar chart representing the amount of product dispensed in the selected temporal range, divided by applied filters and sorted according to the chosen option (the sort type is shown on the x axis). The horizontal line represents the average amount of product in the selected temporal range taking into account filtering, if present.
- C. DISPENSING TABLE - list of the filtered and grouped dispensing operations. Dispensing operations to be displayed are not shown together, but are loaded upon request, as you scroll down the list.
- D. EXPORT to FILE - export of the displayed dispensing operations, to a file. Exporting to PDF, EXCEL spreadsheet and TXT text file is supported. The export includes dispensing operations grouped and filtered according to the grouping and filtering selected by the user.

## 8. SETTINGS

### 8.1 OVERVIEW



The SETTINGS section can be accessed by pressing the menu icon shown to the side. This is the area where site settings are managed. From here you can configure the operation of the software, perform software user administration activity, schedule database backup, manage site owner details and migrate the data from the old versions of the database.

### 8.2 GENERAL CONFIGURATIONS

**A** Language  
Choose a language English

**B** Measurement Unit  
Dispense Liters  
Odometer Km

**C** Location  
Time Format 24 Hours

**D** Decimal Separator Dot

**E** Communication  
Communication type PW-14

**F** Preferences  
Optimize performances The optimization reduces the client's animations

Receive notifications Notifications help you understand when files are exported or dispenses are saved

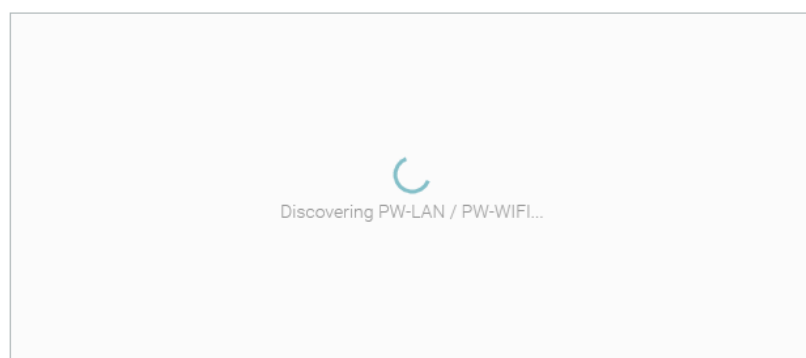
Server down Piusi S.p.a © All rights reserved PIUSI SAT



In details:

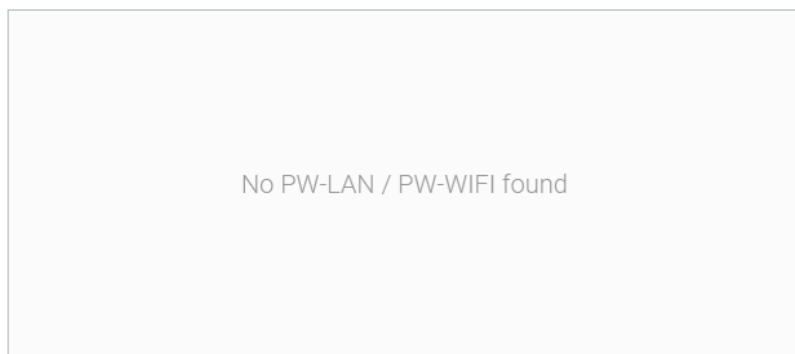
- A. LANGUAGE - software language selection.
- B. UNITS OF MEASUREMENT - units of measurement selection:
  - 1. Unit of measurement for dispensing - defines the unit of measurement for displaying the quantity of fluid dispensed by the fuel dispensers (litres or gallons).
  - 2. Unit of measurement for odometer - defines the unit of measurement for displaying the odometer of the vehicles registered for dispensing.
- C. HOUR FORMAT - format in which you wish to display the dispensing operation time (24/12-hour format).
- D. DECIMAL SEPARATOR - preference for displaying the fractional part (dot or comma).
- E. COMMUNICATION TYPE - choice of communication type to use for dialogue with the site's fuel dispensers. This setting determines the desired method for downloading the data from the fuel dispensers. Three different methods of communication can be chosen:
  - Via PW-14 adapter - the fuel dispensers are connected to the PC via PW-14 adapter.
  - Via network with a PW-LAN / PW-WIFI - the fuel dispensers are connected to the PC via TCP/IP network. To guarantee correct communication, search for and select the PW-LAN / PW-WIFI connected to the network through the dedicated 'discovery' procedure. Press the 'SCAN' button to start the procedure. Subsequently:

Select PW-LAN / PW-WIFI



The process is scanning the network for connected PW-LANs or PW-WIFIs.

Select PW-LAN / PW-WIFI

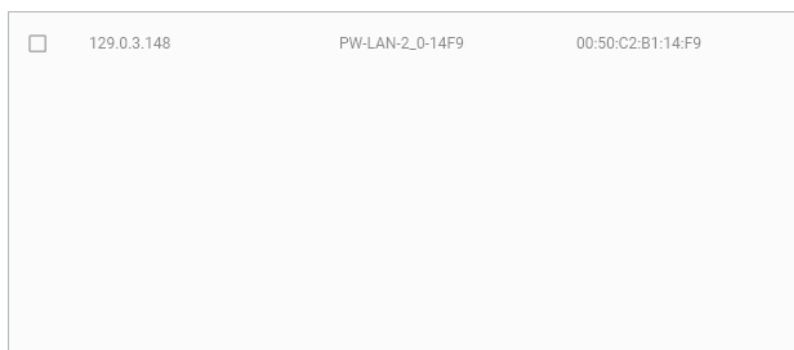


CLOSE

OK

No PW-LAN or PW-WIFI has been found in the network.

Select PW-LAN / PW-WIFI



CLOSE

OK

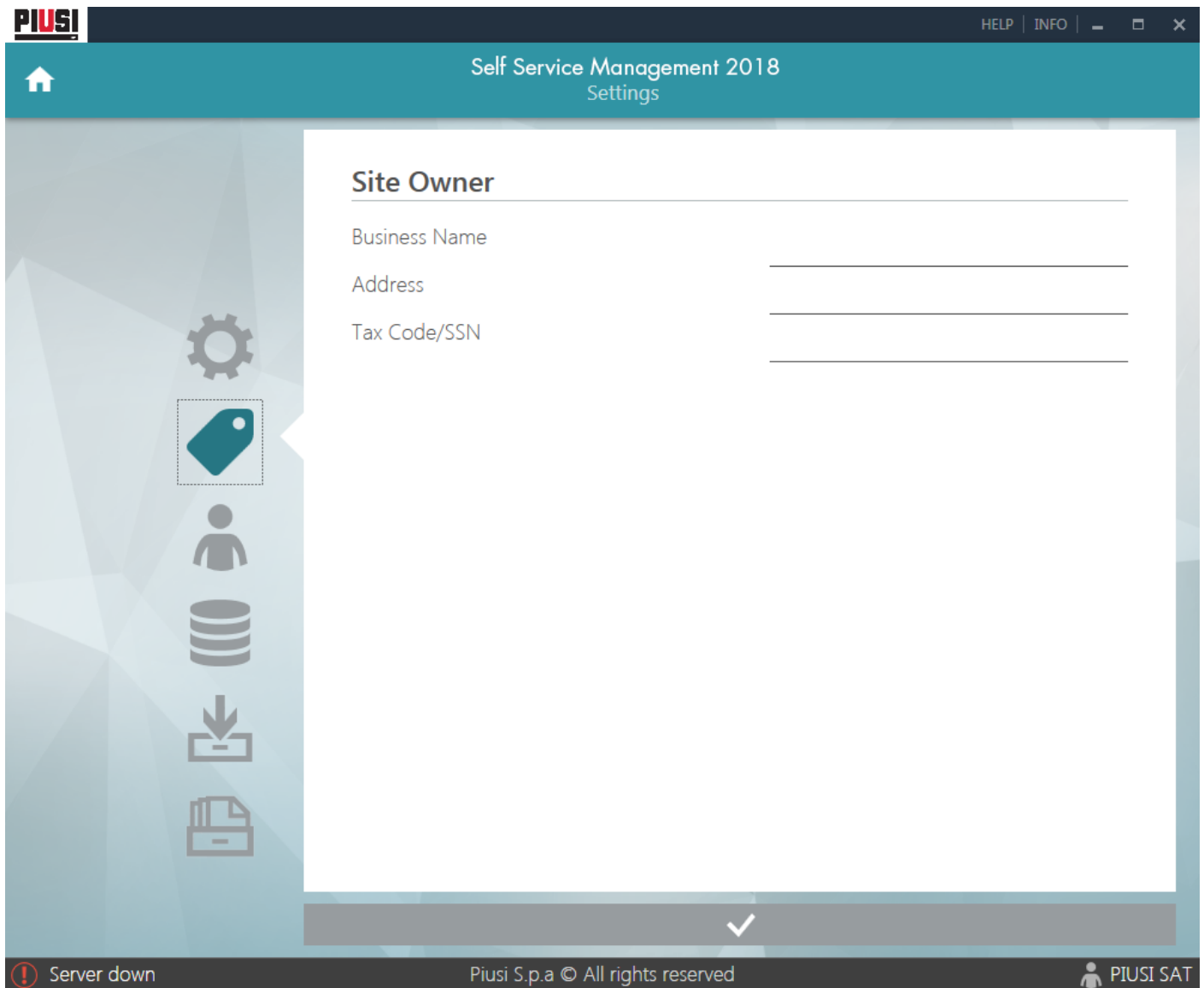
PW-LANs or PW-WIFIs have been found. Select the correct PW-LAN or PW-WIFI and press 'OK' to confirm.

- Using a MANAGER KEY - the fuel dispensers are not connected to the PC; dispensing data is downloaded via key. (See chapter 6.2)

F. PREFERENCES - includes general preferences that do not influence site management, such as: performance optimisation that eliminates any software animation and the option to receive software notifications.

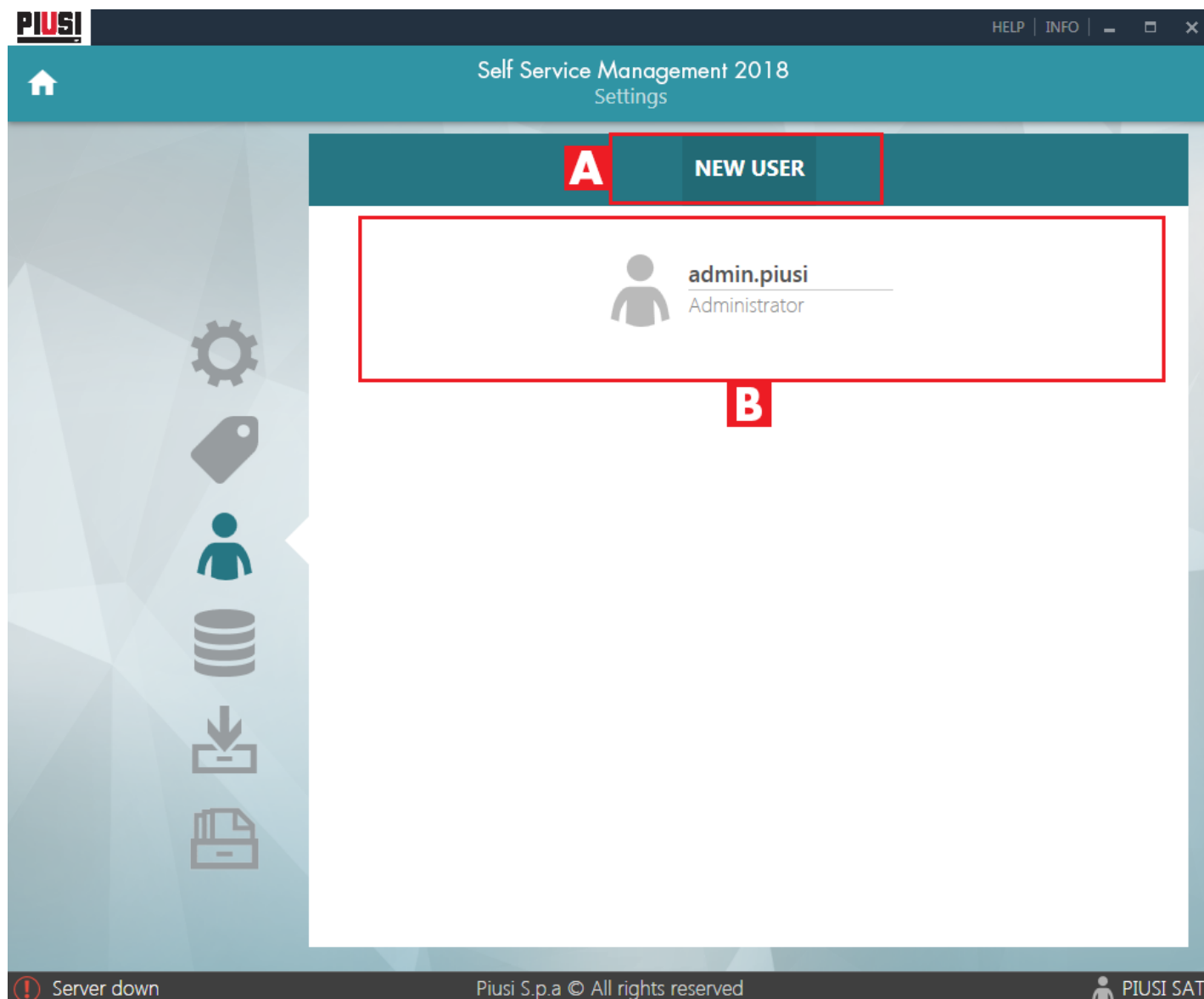
All settings except unit of measurement for dispensing, unit of measurement for odometer, decimal separator and communication type are personal for the connected user. Therefore each user can set configurations as preferred.

### 8.3 SITE OWNER DATA



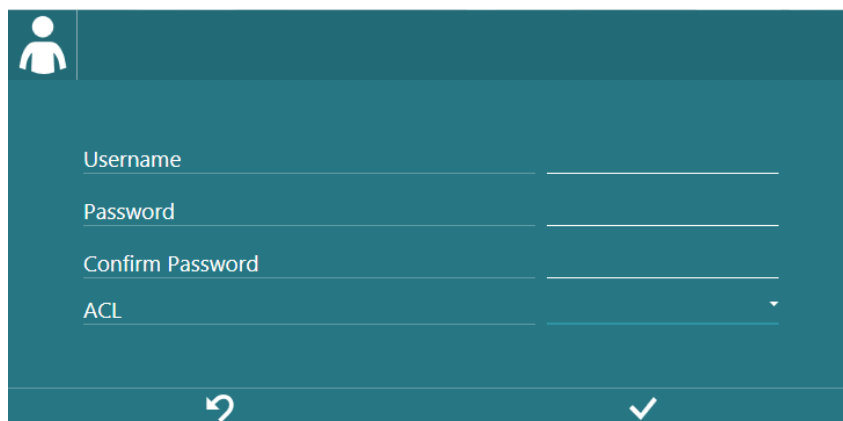
Data can be stored on the site owner.

## 8.4 USER DATA MANAGEMENT



In details:

- A. NEW USER - press this button to access the panel for adding a new user in the system.  
The panel is below:

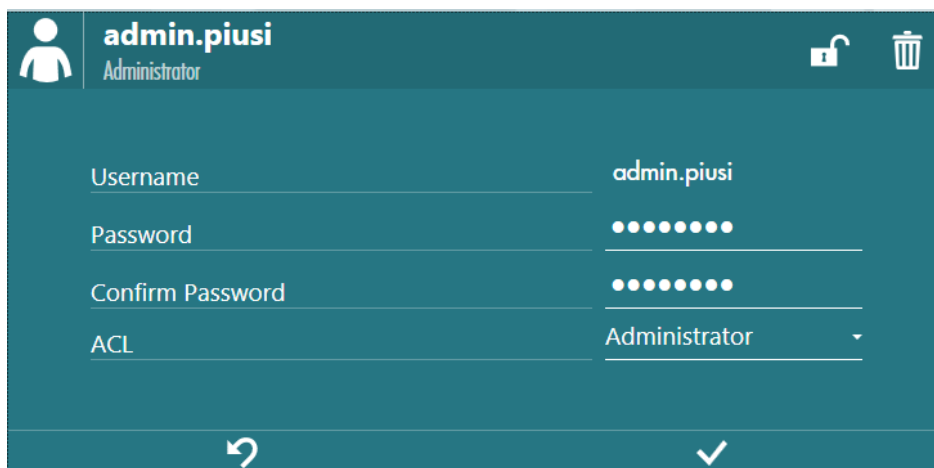


For entering username, password and selecting the privilege level of the user, between ADMINISTRATOR and VIEWER (see chapter 8.4.1).

The username (minimum length 6 characters) and password (minimum length 8 characters) must be no longer than 15 characters.

- B. USER LIST - list of users with access to the site. Each user is described by a summary panel showing the username and privilege level.

When the user has been added, their characteristics can be modified by accessing their panel. See image below:



The following actions can be performed in the panel:

- Editing user data, username, password and privileges.
- Removing the selected user, who won't be able to access the software any longer.
- Disabling authentication for the user, who won't be able to access the software until and administrator re-enables him/her.
- Forcing a connected user logout, immediately closing the session.

**WARNING:**

*It is not possible to delete all users of the site. At least one administrator must always be present in the site. Only users with an ADMINISTRATOR privilege level can delete other users.*

## 8.4.1 USER PRIVILEGE LEVELS

Software functions can be limited according to the privilege level of the users. The type of users are as follows:

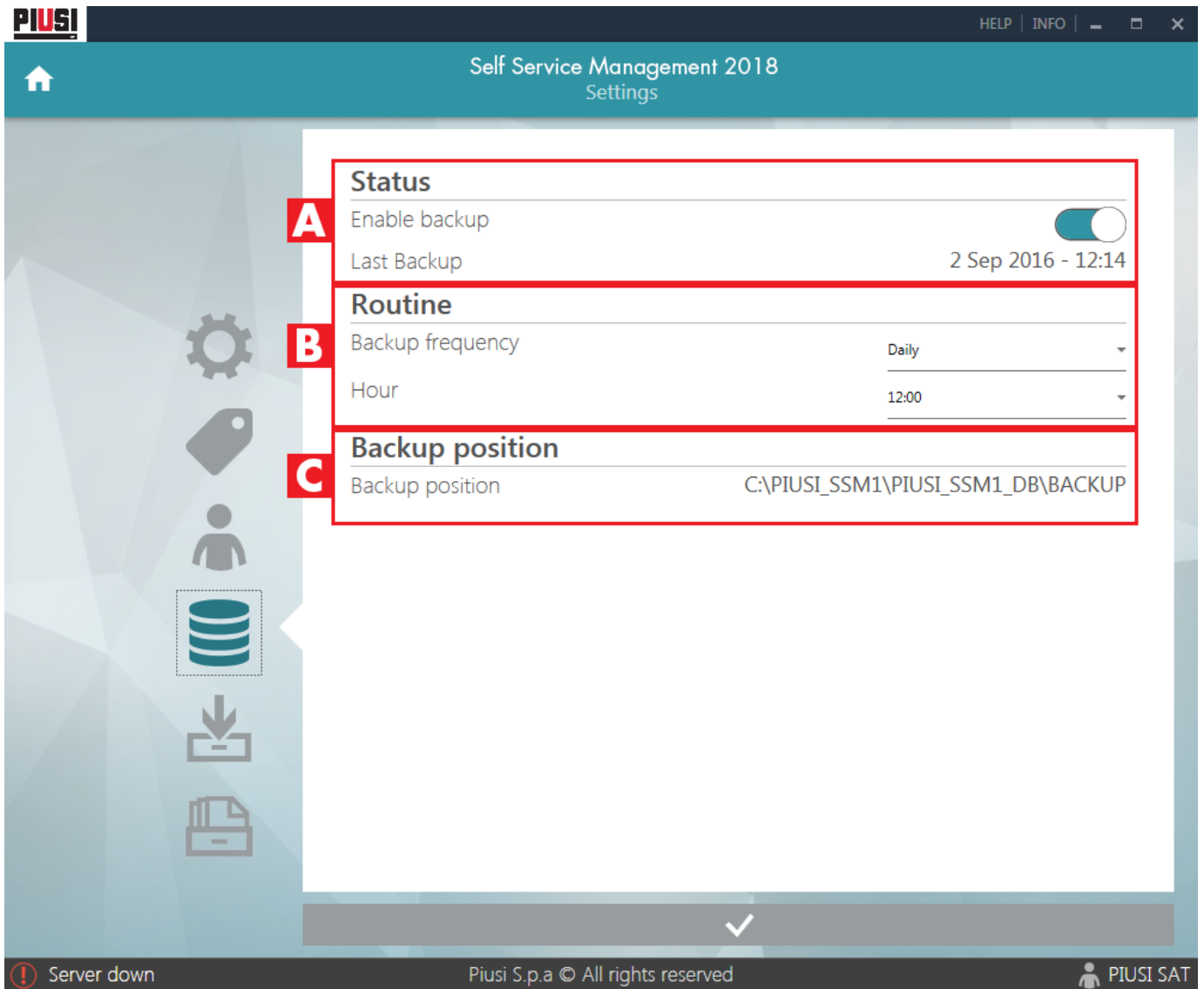
- Administrator
- Viewer

ACTION	ADMINISTRATOR	VIEWER
Add new fuel dispensers	YES	NO
Modify/delete fuel dispensers	YES	NO
Download data from MANAGER KEY	YES	NO
See/export dispensing reports	YES	YES
Modify settings	YES	YES <sup>1</sup>
Modify backup configuration	YES	NO
Update software	YES	NO

---

<sup>1</sup> Only preferences differentiated according to the user can be edited. E.g. System languages  
 Self Service Management 2018 - Version I.O.O  
 This manual belongs to PIUSI S.p.A.  
 The reproduction of all or parts is prohibited.

## 8.5 DATABASE BACKUP CONFIGURATION



**A** Status

Enable backup

Last Backup 2 Sep 2016 - 12:14

**B** Routine

Backup frequency Daily

Hour 12:00

**C** Backup position

Backup position C:\PIUSI\_SSM1\PIUSI\_SSM1\_DB\BACKUP

Server down Piusi S.p.a © All rights reserved PIUSI SAT

In details:

- A. ENABLE/DISABLE BACKUP - you can enable and disable the backup automatic procedure for the database. The procedure is always enabled by default. The date of the last backup made is always displayed. It is recommended to keep this function always active.
- B. BACKUP ROUTINE - indicate the frequency for the database backup: either Daily - one backup a day at the indicated time or Weekly - one backup a week on the indicated day
- C. BACKUP POSITION - shows the path where the performed backups are saved. The path cannot be edited. The backup folder is created during the installation. The preset path is: C:\PIUSI\_SSM1\PIUSI\_SSM1\_DB\BACKUP

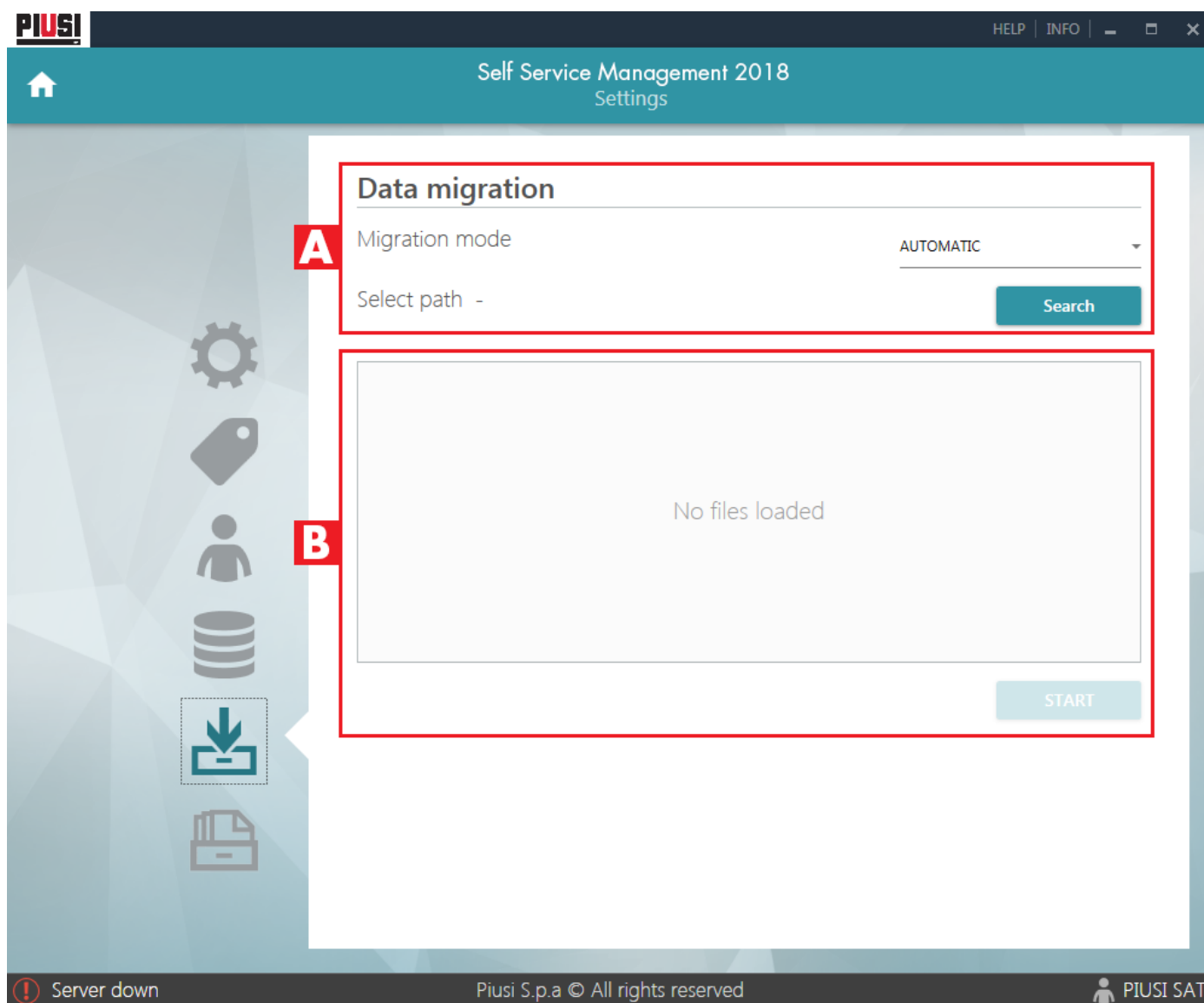
The latest backup performed is always available, including the latest 5. The format of the “.bck” files is as follows: `ssm_bck_yyyymmdd_hhmmss.bck` where ‘yyyy’ indicates the year, ‘mm’ the month, ‘dd’ the day, ‘hh’ the hour, ‘mm’ the minutes and ‘ss’ the seconds when the backup was saved.

**WARNING:**

*If the SSMSERVICE is off or disconnected, the automatic backup service is not guaranteed.*



## 8.6 DATA MIGRATION



In detail:

- A. DATA MIGRATION MODE - method for selecting and loading the Self.mdb database files for migration. Modes available:
  - AUTOMATIC - the Self.mdb files are searched for automatically with a specified path.
  - MANUAL - the Self.mdb files must be selected manually.
- B. DATABASE FILES SELECTED for MIGRATION - list of the files selected for processing by the migration procedure. Press the START button to migrate the data contained in the selected databases.

### **WARNING:**

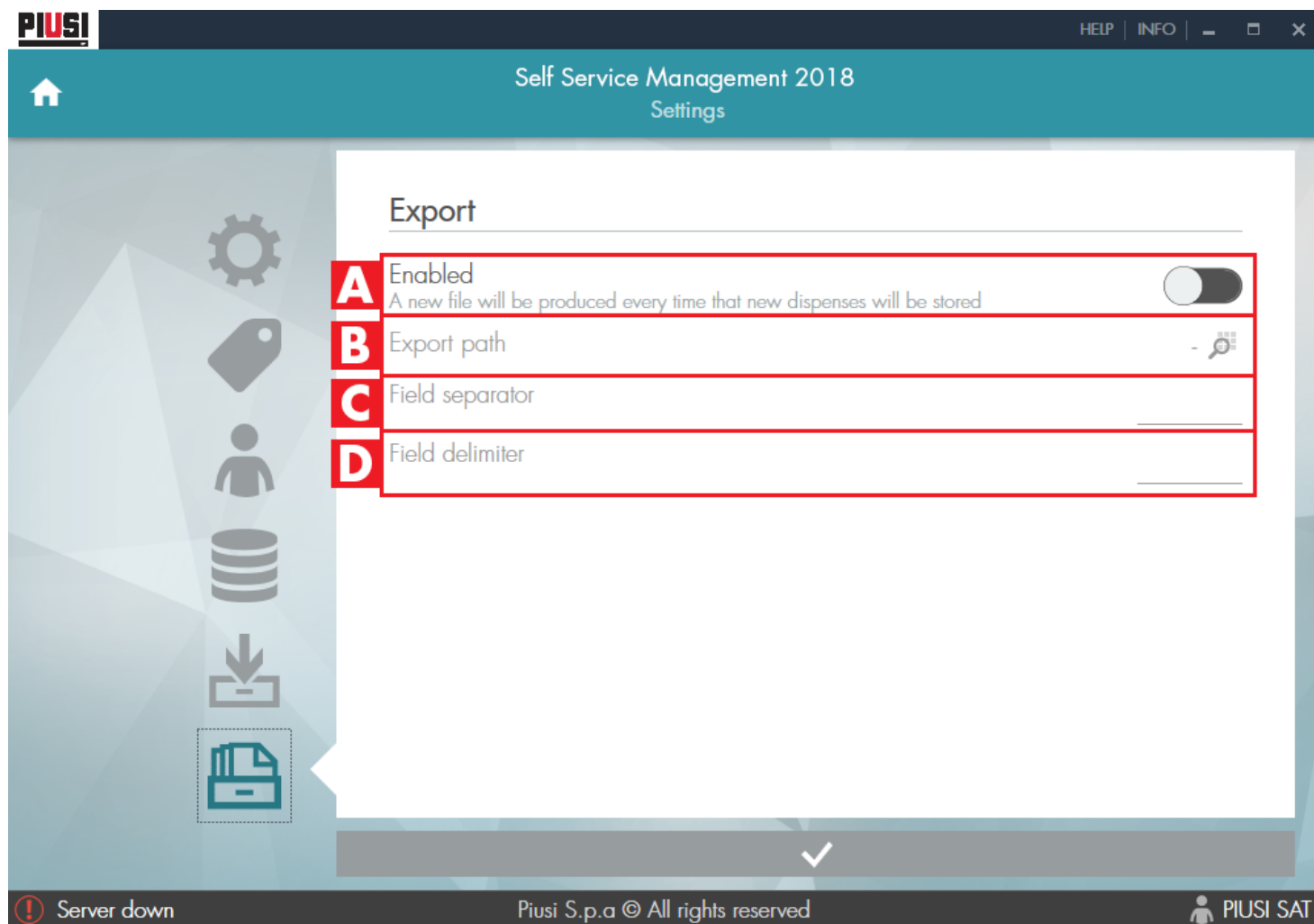
*It is only possible to select and migrate databases (named Self.mdb) generated by the old version of the 'Self Service' software.*

Self Service Management 2018 - Version 1.0.0

This manual belongs to PIUSI S.p.A.

The reproduction of all or parts is prohibited.

## 8.7 EXPORTING DISPENSING OPERATIONS



In detail:

- A. ENABLING/DISABLING the EXPORTING of DISPENSING OPERATIONS - It is possible to enable or disable the procedure of automatically exporting dispensing operations to .csv files. The procedure is disabled by default. The procedure saves all dispensing operations downloaded from the fuel dispensers (using any method of communication) to a .csv file. The format for saving the files is as follows: 'yyyyMMddhhmm.csv', where 'yyyy' indicates the year, 'MM' the month, 'dd' the day, 'hh' the hour and 'mm' the minutes, corresponding to the date and time when the file was exported. The dispensing fields exported are (in order):

*Progressive ID, Operator, Registration number, Date and time, Fuel dispenser number, Fuel dispenser serial number, Odometer, Litres dispensed.*


If multiple dispensing operations are downloaded together, a single .csv file is generated.

- B. EXPORT PATH - The path for saving the exported files must be indicated. Ensure that the path is always accessible and that read/write permissions are present.
- C. SEPARATOR - A custom separator can be indicated for the exported dispensing fields.
- D. DELIMITER - A custom delimiter can be indicated for delimiting the exported fields.

**WARNING:**

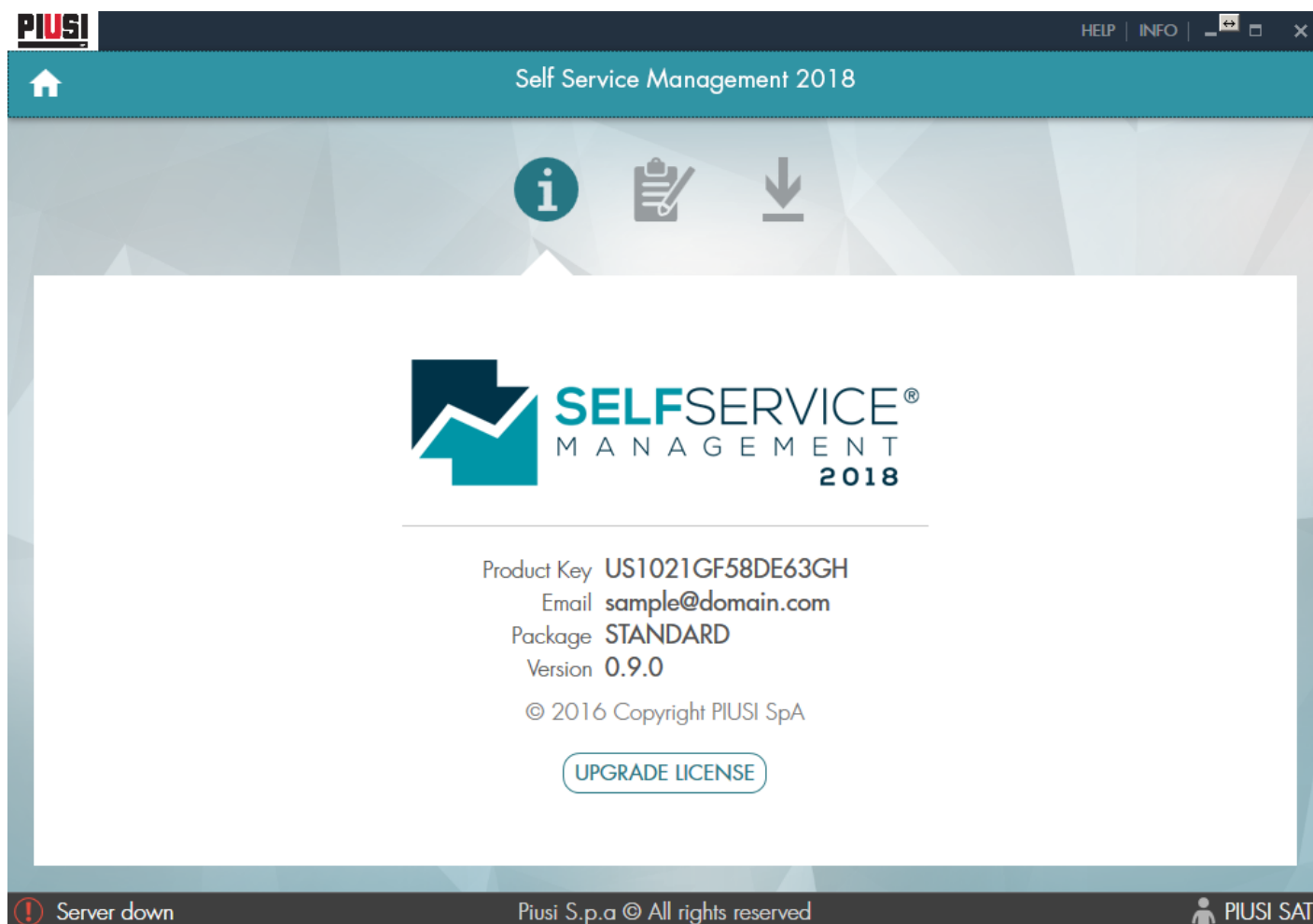
- *Exported dispensing operations cannot be re-exported.*
- *Modifications to field separator and delimiter are not retroactive (the modification will be applied only to new files exported from that point on).*
- *Until a valid save path is provided (accessible and with the correct permission), dispensing operations will not be exported.*
- *It is not possible to modify the order of the fields exported, add others or delete those present.*

## 9. SOFTWARE INFORMATION, PRODUCT REGISTRATION AND UPDATES

The INFO button  in the software's upper bar can be used to access the section for displaying the information about the product used and activate the product to receive the software updates.

This section is divided into three submenus, software INFORMATION, product ACTIVATION and software UPDATE.

### 9.1 SOFTWARE INFORMATION



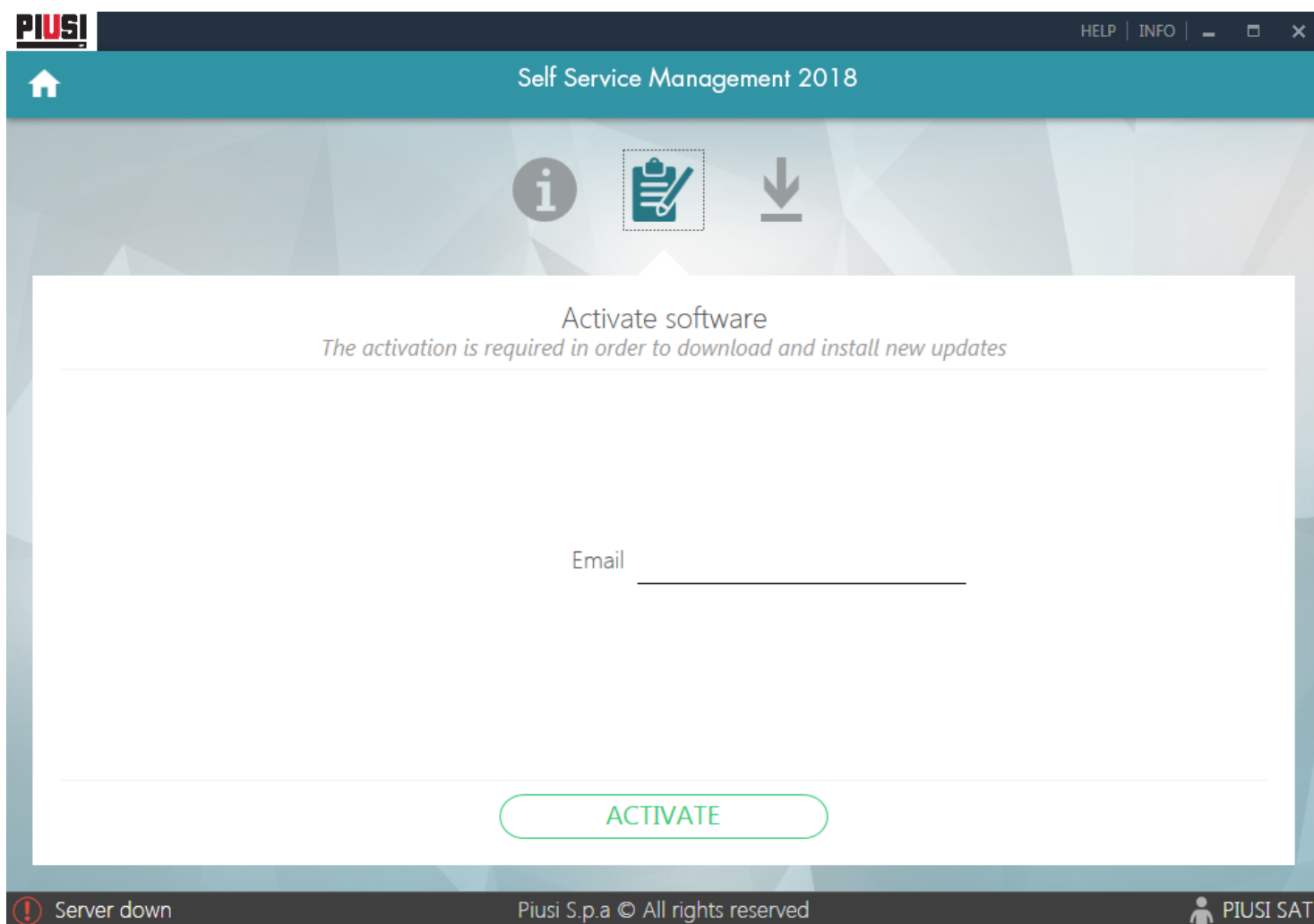
The screenshot shows the 'Self Service Management 2018' application window. The title bar includes the PIUSI logo and window controls. The main content area displays the 'SELF SERVICE MANAGEMENT 2018' logo and the following license details:

- Product Key: US1021GF58DE63GH
- Email: sample@domain.com
- Package: STANDARD
- Version: 0.9.0
- © 2016 Copyright PIUSI SpA

Below the license information is a button labeled 'UPGRADE LICENSE'. The bottom status bar shows a 'Server down' warning, the text 'Piusi S.p.a © All rights reserved', and the user profile 'PIUSI SAT'.

In this section, the information about the purchased licence is shown along with the software version currently used.

## 9.2 PRODUCT ACTIVATION

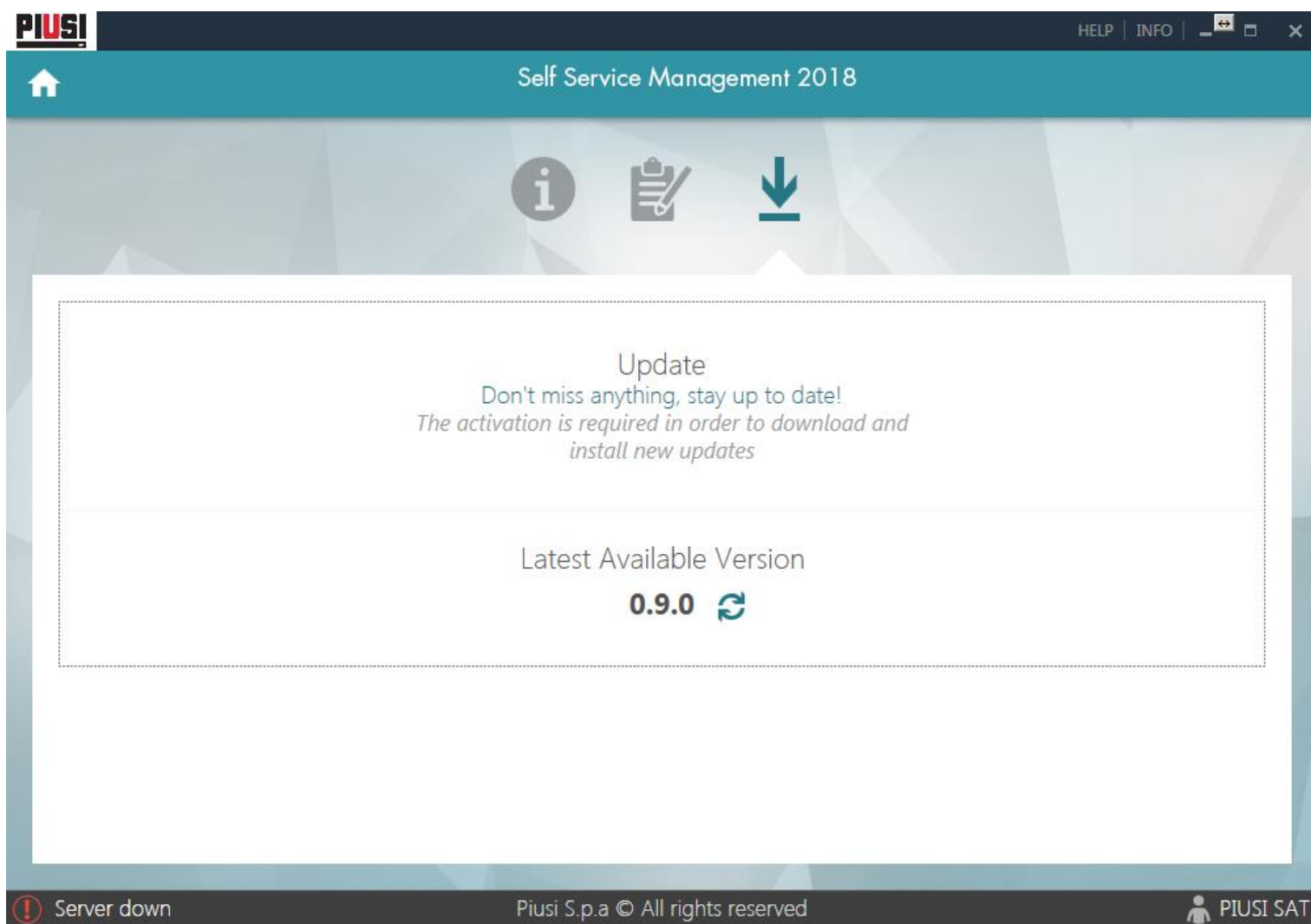



Activation of the product purchased is managed in this section in order to guarantee support for the software updates. Insert the E-mail address used to register on the Piusi portal([www.piusi.com](http://www.piusi.com) -> PIUSI PORTAL) . If you are not registered on the portal yet we recommend to do it as soon as possible.


Every time there is a new update a comprehensive notice

**UPDATE AVAILABLE** will be displayed, by pressing on it the user will be redirected to the UPDATES section (see chapter 9.3) to download the new software release.

## 9.3 SOFTWARE UPDATES



This section shows the latest available update. To download it press the “download” button . You will be automatically redirected to the link for online download.

The search for updates is an automatic process that looks for a new software release in the Piusi servers at regular intervals. If the version currently used is the most recent you can try and look for a new update by pressing the  button.

To download new updates make sure the product has been previously activated (see chapter 9.2).

### **WARNING:**

*An internet connection is necessary to download the update.*