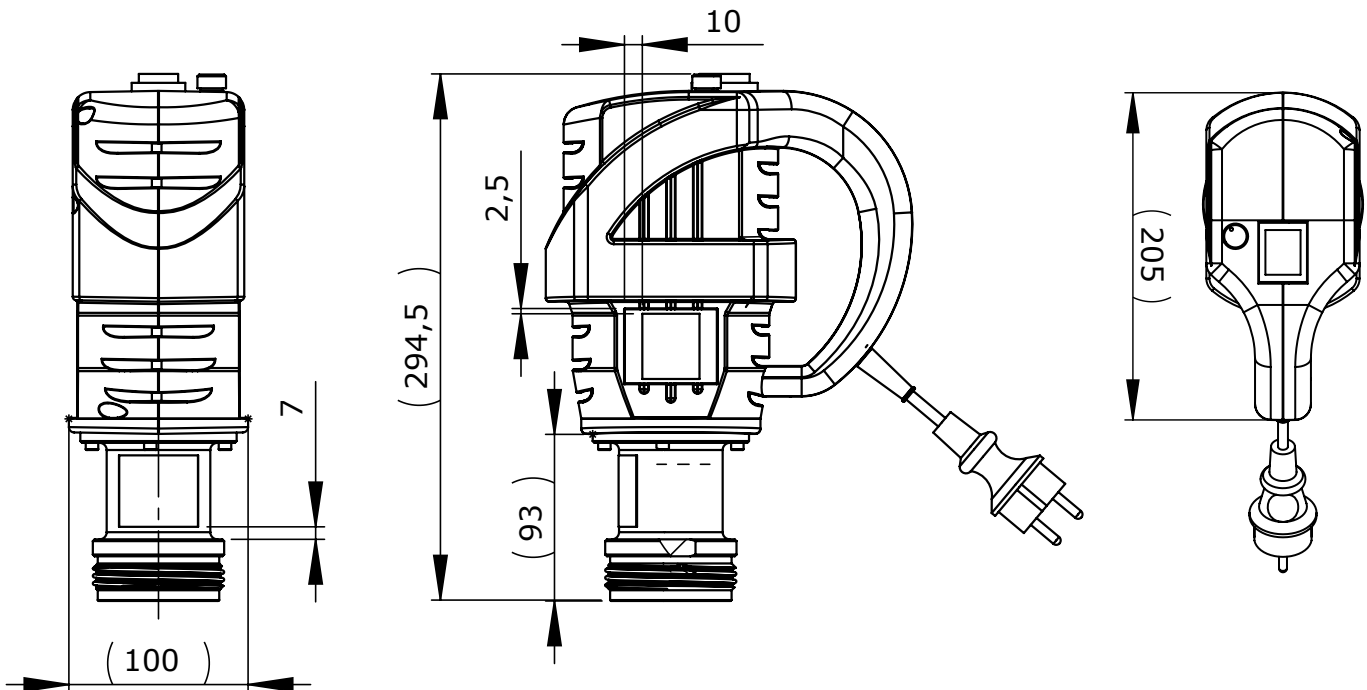




Technical Specifications

Enclosure:.....	TEFC (IP54)
Voltage:.....	230V
Power Rating:.....	450 W
Phase:.....	1
Nominal Current:.....	2,5 A
Frequency:.....	50-60 Hz
Insulation Class:.....	Class I
Certification:.....	CE
Housing Material:.....	Thermoplastic Polyamid
Power Cord Length:.....	4,0 m
Power Cord Plug Type:.....	CEE 7/7
Noise Level:.....	70-80 dBa
Thermal Overload:.....	Yes
Variable Speed:.....	SPE-450V: 1.000-9.500 rpm
Fixed Speed:.....	SPE-450: 9.500 rpm
Weight:.....	3,3 kg



WARNING: Not suitable for pumping flammable or combustible liquids or use in a hazardous duty environment.

Note: Not recommended for use with the SP-700SR or 800SR Series pump.