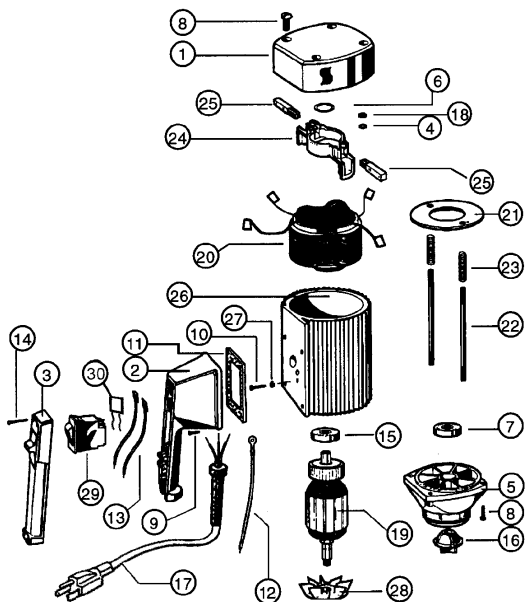


DRUM & CONTAINER PUMPS (Centrifugal) Section 1

SP-280P SERIES MOTOR



ITEM NUMBER	DESCRIPTION	PART NUMBER
1	Motor cover	8000
2	Switch housing	8001
2A	Switch housing for variable speed, includes potentiometer	
	110-120V	8004
	220-240V	8005
2B	Switch housing for batch control, includes potentiometer and BCS port connection	
	110-120V	8006
	220-240V	8007
3	Switch cover	8002
4	Lock washer	8071
5	Lower housing	8100
6	Wave washer	8125
7	Ball bearing	8126
8	Screw for plastic housing	8130P
9A	Screw for 110-120V	8131
9B	Screw for 220-240V	8131LVR
10	Ground screw	8162
11	Gasket	8167
	Low voltage release (for 220-240V)	8167LVR
12	Earthing lead	8183
13	Lead	8185
14	Screw	8220
15	Ball bearing	8331
16	Motor coupling	8333
17	Power cord w/ strain relief & plug	
	110-120V	8360
	220-240V	8705
18	Hexagon nut	8448
19	Armature	
	110-120V	8502
	220-240V	8701
20	Stator	
	110-120V	8503
	220-240V	8702
21	Guide disc	8504
22	Rod connector	8506
23	Pressure spring	8507
24	Brush holder	8508
25	Carbon brush	
	110-120V	8509
	220-240V	8703
26	Motor housing, plastic	8510P
27	Star washer	8511
28	Fan	8512
29	Overload switch,	
	8.5 amp 110-120V	8611
	5 amp 220-240V low voltage release	8704LVR
30	EMI filter	8003
31	Repair kit 110-120V (includes PN's 8333 & (2) 8509)	9055
32	Repair kit 220-240V (includes PN's 8333 & (2) 8703)	9056



SP-280P open motor should not be used to pump flammables.